

READ THESE INSTRUCTIONS CAREFULLY.

Time : 1 Hour 40 Mins

1. You have been given this question paper and a separate answer sheet. The question paper contains 50 questions.
2. Make sure that you have written on the answer sheet.

1. Which one of the following is a body building food?

- | | |
|----------|--------------|
| A. Maize | B. Pineapple |
| C. Fish | D. Vegetable |

2. The tooth drawn below is used for:



- | | |
|-------------|------------|
| A. grinding | B. tearing |
| C. chewing | D. cutting |

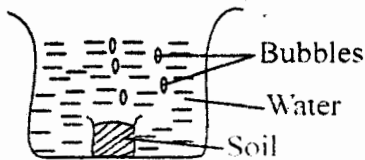
3. Which animal below is useful to human being?

- | | |
|-------------|--------|
| A. Housefly | B. Bee |
| C. Termite | D. Rat |

4. An adult has how many molars?

- | | |
|-------|------|
| A. 12 | B. 8 |
| C. 6 | D. 4 |

5. Grade 4 pupils carried out the experiment below to investigate a certain soil component.



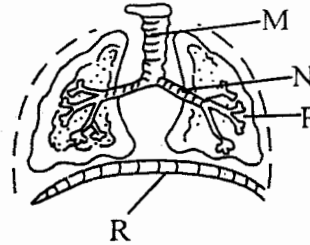
What were they investigating?

- | | |
|-----------------|------------------|
| A. Soil in air | B. Soil in water |
| C. Air in water | D. Air in soil |

6. The digestion of food starts in the

- | | |
|--------------------|---------------------|
| A. Stomach | B. Mouth |
| C. Small intestine | D. Large intestines |

The diagram below shows the human breathing system. Use it to answer questions 7 and 8.



7. Name part labelled M and P respectively

- | |
|--------------------|
| A. Nose, lungs |
| B. lungs, trachea |
| C. trachea, lungs |
| D. bronchus, lungs |

8. What happens to part marked R when inhaling?

- | |
|-------------------------------|
| A. moves up |
| B. flattens |
| C. makes dome-shape |
| D. moves outwards and upwards |

9. Which is the first stage of HIV infection?

- | |
|----------------------|
| A. Starting stage |
| B. Incubation stage |
| C. Window stage |
| D. Symptomatic stage |

10. Which one of the following is **not** part of breathing system?

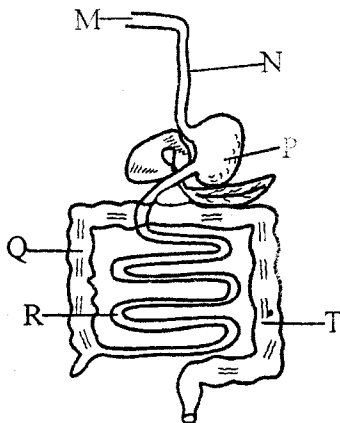
- | | |
|--------------|-------------|
| A. Gullet | B. air sacs |
| C. diaphragm | D. lungs |

11. When breathing in all the following happens to the air in the nose and trachea **except**

- | | |
|---------------|--------------|
| A. warming | B. purifying |
| C. moistening | D. absorbed |

12. Which one of the following below is a use of water in the industries?
 A. Making fountains B. Cooking
 C. Irrigation D. Swimming
13. Which tools below is used to cut timber?
 A. Axe B. Hammer
 C. Saw D. Jembe
14. Simple tools can be maintained through the following ways **except**.
 A. cleaning after use
 B. oiling and greasing wooden handles
 C. proper use
 D. sharpening
15. Pressure in liquids depends on
 A. depth B. weight
 C. area D. mass
16. Which one of the following is **not** a use of heat?
 A. Drying clothes B. cooking
 C. warming D. discourage pests

The diagram below shows the digestive system of a human being. Use it to answer questions 17 and 19.



17. Digested food is absorbed in the part labelled?
 A. P B. Q
 C. R D. M
18. Water and minerals are absorbed in the part labelled?
 A. Q B. R
 C. T D. P

19. Name the part marked N
 A. Mouth B. Oesophagus
 C. Stomach D. Small intestines
20. Clouds are grouped according to the following **except**
 A. appearance B. height
 C. weight D. shape
21. Which one of the following is observed in the sky during the day and night?
 A. Moon and sun
 B. Clouds and sun
 C. Stars and clouds
 D. Moon and clouds
22. Which group of foods below makes a balanced diet?
 A.

Kales
Green banana
Irish potatoes

 B.

Meat
Ugali
Beans

 C.

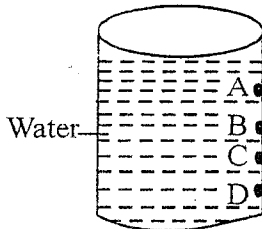
Apples
Vegetables
Chapati

 D.

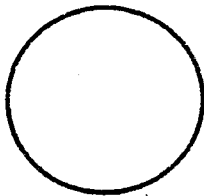
Arrowroots
Onions
Beans
23. Which animal provide wool and mutton?
 A. Sheep B. Goat
 C. Cow D. Poultry
24. Which one of the following is **not** a source of heat?
 A. Sun B. Fire
 C. Electricity D. Fireflies
25. Which group of objects below sinks in water?
 A. Paper, stone, pins
 B. Spoon, stick, bottle top
 C. Stone, glass, pin
 D. Wood, sand, mable
26. The dead decaying plants and animal forms

 A. humus B. mineral salt
 C. air D. living things

27. Which one of the following is **not** needed for a good health?
 A. Food B. Sleep
 C. Exercise D. Work
28. Std 5 pupils put water in a tin with holes as shown below



- Which hole had the shortest water jet?
 A. D B. C
 C. B D. A
29. The ability of the body to fight the organisms that causes diseases is called
 A. deficiency B. immunity
 C. acquired D. defence
30. Which one of the following is a tuber crop?
 A. Pawpaw B. Millet
 C. Sunflower D. Yams
31. The phase of the moon drawn below is called

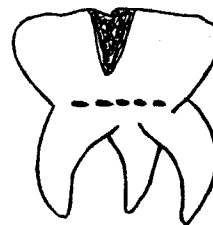


- A. full moon B. new moon
 C. gibbous D. crescent
32. A caterpillar moves by:
 A. crawling B. walking
 C. slithering D. gliding
33. Blind people read and write using
 A. scroll B. dots
 C. braille D. digits
34. The **best** way to store large amount of water is by
 A. jug B. dam
 C. taps D. drums

35. Which animal below protect itself by hiding in shell?
 A. Bee B. Snail
 C. Snake D. Millipede

36. Which one of the following is **not** an hygienic way of handling food?
 A. Cleaning of hands
 B. Cleaning food eaten raw
 C. Cleaning utensils
 D. Cleaning hands before visiting toilet
37. Which crop below is **not** a vegetable?
 A. Carrots B. Tomato
 C. Cabbage D. Sweet potatoes

38. The problem of the tooth drawn below is called

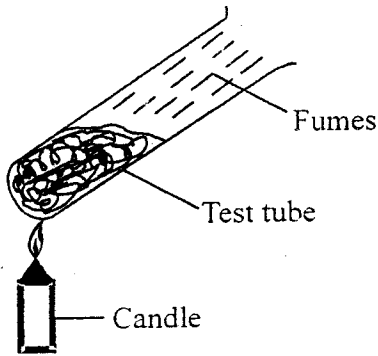


- A. tooth decay B. tooth cavity
 C. bleeding gum D. bad breath
39. Which one of the following animals is **not** correctly matched with its feeding habits?

	Animal	Feeding habit
A.	Butterfly	Sucking
B.	Locust	Chewing
C.	Tick	Sucking
D.	Spider	Chewing

40. Birds fluffs their feathers on a cold day in order to
 A. distribute heat all over the body
 B. scare the enemies
 C. to trap air
 D. prevent heat loss from the body
41. Which one of the following personal effects if shared can lead to HIV/AIDS infections
 A. Towel B. Spoon
 C. Comb D. Toothbrush

42. Grade 4 pupils heated soil as shown below



What were the pupils investigating?

- A. Humus in the water
B. Air in soil
C. Water in soil
D. Organic matter in soil
43. Which one consists of protective food only?
- A. Spinach, mango, carrot
B. Milk, meat, eggs
C. Cassava, ugali, green banana
D. Chicken, ugali, cabbage
44. Which one of the following is **not** a poultry?
- A. Duck B. Turkey
C. Goose D. Scare crow
45. Blackjacks should be weeded from the vegetable farm when they are still young because
- A. it is easy to uproot young weeds
B. it reduces loss of water and minerals
C. it controls the spread of weeds by reducing seed production
D. to avoid loss of soil nutrients

46. Which one of the following is **not** a characteristic of animals?
- A. They move
B. They remove wastes
C. They make their own food
D. They reproduce
47. The material that allows light to pass through them are called
- A. opaque
B. transparent
C. translucent
D. conductors
48. Which digestive juice is produced in the mouth?
- A. Saliva
B. Gastric juice
C. Bile juice
D. Digestive juice
49. A metallic bowl floats on water this is due to its
- A. shape
B. size
C. material
D. mass
50. Which material is used for making clouds when modelling the sky?
- A. Plasticine
B. Aluminium foil
C. Cotton wool
D. Clay