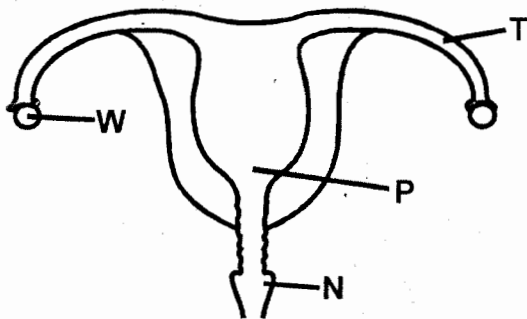
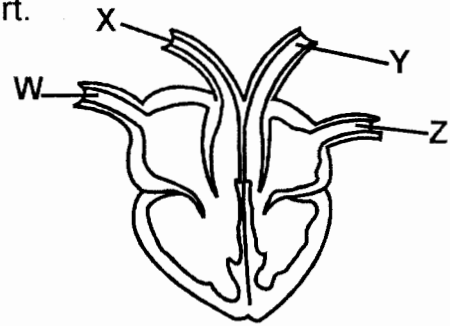


- The following are parts of the circulatory system except
 - heart
 - blood vessels
 - lungs
 - blood.
- Which one of the following types of teeth is **not** deciduous?
 - Molars
 - Premolar
 - Canines
 - Incisors
- Lack of all food nutrients in a diet can lead to
 - kwashiorkor
 - marasmus
 - rickets
 - anaemia.
- The type of teeth with two roots is used for
 - cutting food
 - tearing food
 - biting food
 - crushing food
- In which of the following parts labelled below does the fertilization take place?



- W
 - P
 - T
 - N
- The following are signs and symptoms of certain diseases.
 - Coughing.**
 - Abdominal pains.**
 - Aches in muscles and joints.**
 - Skin rashes.**
 Which one of the signs above are of typhoid?
 - (i) and (ii)
 - (ii) and (iv)
 - (i) and (iii)
 - (i) and (iv)

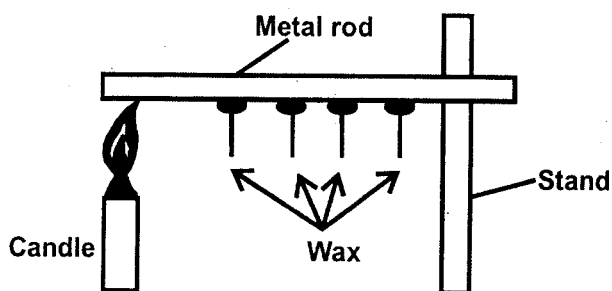
- The diagram below shows a mammalian heart.



- Which blood vessel above carries oxygenated blood from the lungs to the heart?
- W
 - X
 - Y
 - Z
- The largest and the third planets respectively are;
 - Earth and Jupiter.
 - Jupiter and Venus.
 - Jupiter and Mars.
 - Jupiter and Earth.
 - Which one of the following vaccines is **not** administered through injection?
 - Anti polio
 - DPT
 - BCG
 - Anti measles.
 - Pupils saw an animal with the following characteristics.
 - Moist skin.**
 - Lay unfertilized eggs.**
 - Varying body temperature.**
 The animal is **likely** to be
 - toad
 - fish
 - duck billed platypus
 - ostrich
 - Which animal provides the farmer with mohair and mutton?
 - Sheep
 - Cow
 - Goat
 - Camel
 - Which one of the following is the **last** stages of seed germination process?
 - Absorption of water and air.

- B. Bursting of testa.
- C. Radicle emerges.
- D. Plumule emerges.

13. Which one of the following does not explain the importance of proper lighting of the house?
- A. Keeping pests away.
 - B. To improve safety in the house.
 - C. Prevent accidents
 - D. Taking photographs.
14. A metallic boat floats on water because of its;
- A. shape
 - B. material
 - C. size
 - D. weight
15. Which pair of plants uses the part of air which is 78% to make their nutrients?
- A. Peas and groundnuts.
 - B. Tomatoes and beans.
 - C. Rice and sorghum.
 - D. Soya beans and sugarcane.
16. The experiment below was done by Std 6 pupils to demonstrate a certain aspect of heat.



Which aspect of heat was being demonstrated?

- A. Convection in solids.
 - B. Melting of wax.
 - C. Expansion of solids.
 - D. Conduction in solids.
17. In a flower, fertilization takes place in the
- A. anthers
 - B. ovary
 - C. fallopian tube
 - D. stigma
18. Which one of the plants below does not reproduce by means of seeds?
- A. Sunflower
 - B. Maize
 - C. Simsim
 - D. Mould
19. Which one of the following is **not** a water borne disease?
- A. Bilharzia
 - B. Cholera
 - C. Malaria
 - D. Typhoid

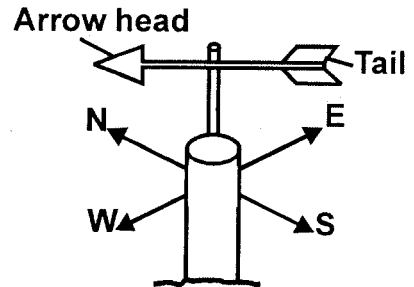
20. Clouds are classified according to all the following **except**

- A. shape
- B. size
- C. height
- D. colour

21. Which vitamin works together with calcium to improve bones and teeth?

- A. Vitamin D
- B. Vitamin A
- C. Vitamin C
- D. Vitamin B

22. The diagram below shows a weather instrument.



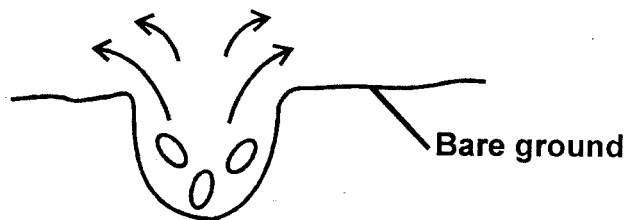
The instrument above is used for

- A. measuring the direction and strength of the wind.
- B. measuring the speed of the wind.
- C. showing where the wind is blowing from.
- D. measuring the temperature of the atmosphere.

23. Which blood component is responsible for blood clotting?

- A. Platelets
- B. Plasma
- C. Red blood cells
- D. White blood cells

24. The type of soil erosion drawn below can be prevented by



- A. planting soil cover crops
- B. terracing
- C. building gabions
- D. cutting trees

25. During a nature walk, pupils saw exposed roots of trees in their compound. Which type of soil erosion had occurred?

- A. Gully erosion.
- B. Sheet erosion.
- C. Rill erosion.
- D. Splash erosion.

26. When exhaling

- A. lungs contract
- B. diaphragm flattens
- C. ribs move upwards and downwards
- D. lungs expand

27. In which of the following methods of grazing are the animals restricted by temporary fences in their farm units where they feed?

- A. Zero grazing B. Strip grazing
C. Herding D. Paddock grazing

28. When modelling the solar system, which one of the following is the first step?

- A. Drawing orbits.
B. Sticking planets of the orbit.
C. Modelling the planet and sun.
D. Putting name tags.

29. The following materials are translucent **except**

- A. oiled paper B. skylight
C. frosted glass D. fresh milk

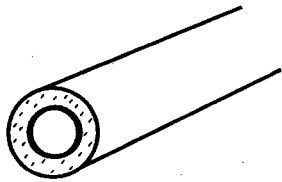
30. Which form of energy is produced by vibrating objects?

- A. Sound B. Heat
C. Light D. Electricity

31. Which one of the following shows a substance with a definite shape and size?

- A. sand B. air
C. water D. water vapour

32. Which one of the following is not the characteristics of the blood vessel drawn below?

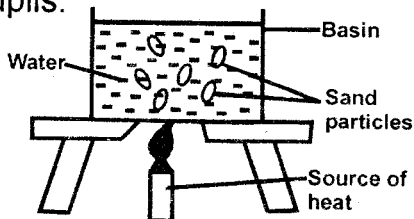


- A. It has thick elastic walls.
B. The lumen is narrow.
C. Carry blood under higher pressure.
D. Carries oxygenated blood only.

33. On a see saw, a lighter boy can lift a heavy boy when

- A. the light boy moves further from the turning point
B. when the heavy boy moves further from the fulcrum
C. the light boy moves closer to the fulcrum
D. both sit on the same side of the see-saw.

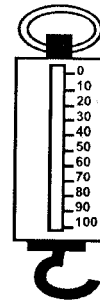
34. The set up below was used by Std 5 pupils.



What were the pupils investigating?

- A. Solubility of sand.
B. Convection in liquid.
C. Radiation in liquids.
D. Conduction in liquids.

35. The diagram below shows a certain instrument.



The above instrument can be used to measure

- A. length B. weight
C. speed D. mass

36. Which pair of methods of food preservation are both modern and traditional methods?

- A. Drying and salting.
B. Drying and use of low temperature.
C. Canning and refrigeration.
D. Smoking and use of honey.

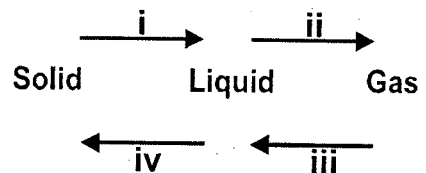
37. A child had the following signs and symptoms.

- (i) **Crying often.**
(ii) **Looking old.**
(iii) **Wasted muscles.**
(iv) **Weakened body.**

The child was **likely** to be suffering from

- A. marasmus B. rickets
C. kwashiorkor D. anaemia.

38. The diagram below shows the changes of states of matter.

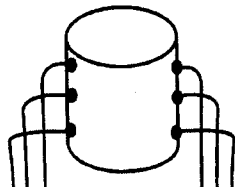
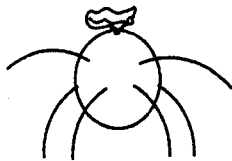
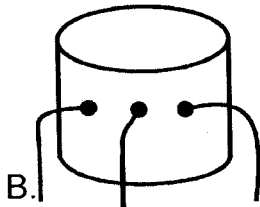
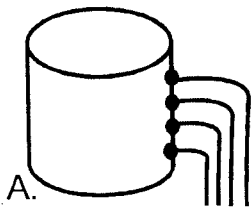


Which two processes required cooling of the matter?

- A. (i) and (ii)
B. (ii) and (iii)
C. (iii) and (iv)
D. (i) and (iv)

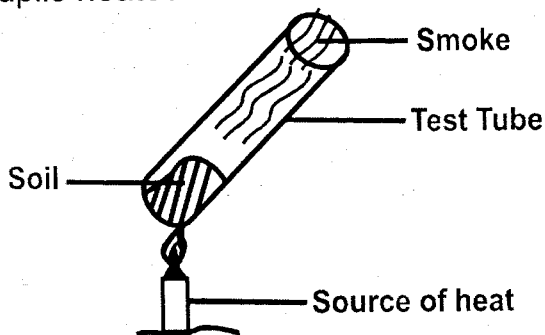
39. Which statement below is **not** true about the force? Force
- make a moving objects to stop
 - opposes motion
 - is measured in newtons
 - changes the state of an object.

40. Which diagram below can be used to demonstrate that pressure in liquids increases with depth?



41. Which is the function of the red blood cells in the body?
- Clot the blood.
 - Fight germs.
 - Carry oxygen.
 - Carry carbon dioxide.
42. Which animals below can be classified together with snake?
- Turtle
 - Newt
 - Snail
 - Hen

43. Pupils heated soil as shown below.



Which components of soil was being investigated?

- Animals
 - Water
 - Air
 - Humus
44. Which drug below is **not** prohibited in Kenya?
- Alcohol
 - Bhang
 - Mandrax
 - Cocaine

45. The **main** blood vessel that carries blood from the heart to the other parts of the body is called

- aorta
- vena cava
- pulmonary vein
- pulmonary artery

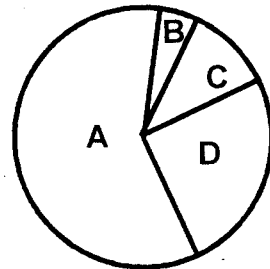
46. Which statement is **not** true about sound energy? Sound energy

- is produced by vibrating objects
- travels in all directions
- cannot travel in vacuum
- travels in a straight line.

47. A flower with a feathery stigma also

- has sticky pollen grain
- is dull
- is scented
- produce nectar

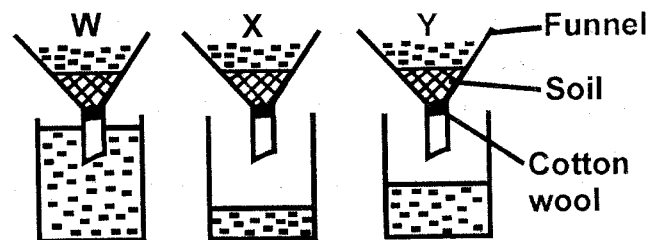
48. The diagram below shows air composition.



Which gas labelled above is used in bulbs?

- D
- C
- B
- A

49. Pupils from Bidii Primary carried out the experiment below.



Which of the following statements is **correct** about the above experiment?

- soil **W** makes the longest ribbons.
 - soil **X** has the lowest capillarity.
 - soil **Y** is the most porous.
 - soil **X** cracks when dry.
50. Empty medicine containers should be;
- burnt
 - used to store food stuffs
 - buried deep in the soil
 - thrown into the river.