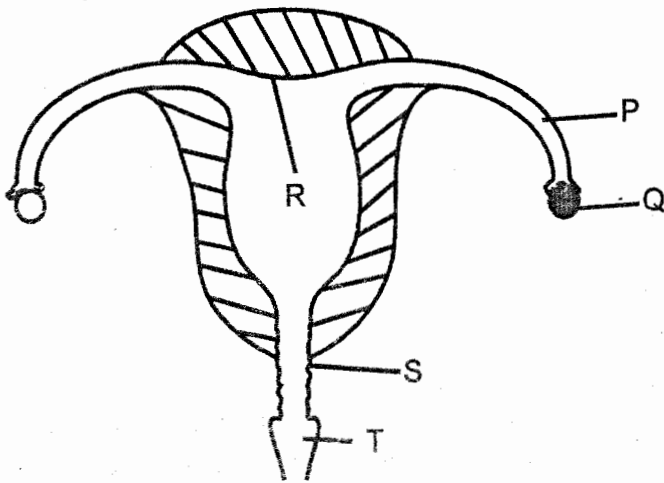


- In which parts of the human digestive system does absorption take place?
 - Small intestine and stomach.
 - Large intestine and liver.
 - Small intestine and large intestine.
 - Large intestine and rectum.

- The diagram below represents the parts of the female reproductive system in human beings.



The parts labelled P, Q, R, S and T represents

	P	Q	R	S	T
A.	Vagina	Cervix	Uterus	Ovary	Oviduct
B.	Oviduct	Ovary	Uterus	Cervix	Vagina
C.	Ovary	Oviduct	Vagina	Uterus	Cervix
D.	Oviduct	Ovary	Uterus	Vagina	Cervix

- Which of the following blood vessels carries blood from the lungs to the heart?
 - Vena cava
 - Pulmonary artery
 - Aorta
 - Pulmonary vein

- Which one of the following takes place during breathing out?
 - The diaphragm forms a dome shape.
 - The rib cage move upwards and inwards.
 - The diaphragm move downwards and outwards.
 - The ribs move downwards and outwards.

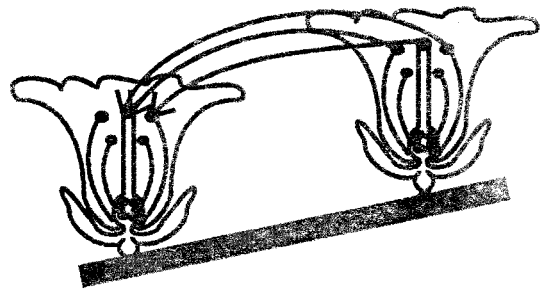
- Which one of the following types of teeth is the last to be shed?
 - Pre-molar.
 - Incisors.
 - Molar.
 - Canines.

- Which of the following groups consist of only diseases that are immunizable?
 - Cholera, bilharzia, AIDS.
 - Tuberculosis, diphtheria, hepatitis B.
 - Tetanus, yellow fever, malaria.
 - Poliomyelitis, malaria, measles.

- The **main** reason for storing drugs in properly labelled containers is to avoid
 - wrong dosage
 - getting spoilt
 - contamination
 - getting expired.

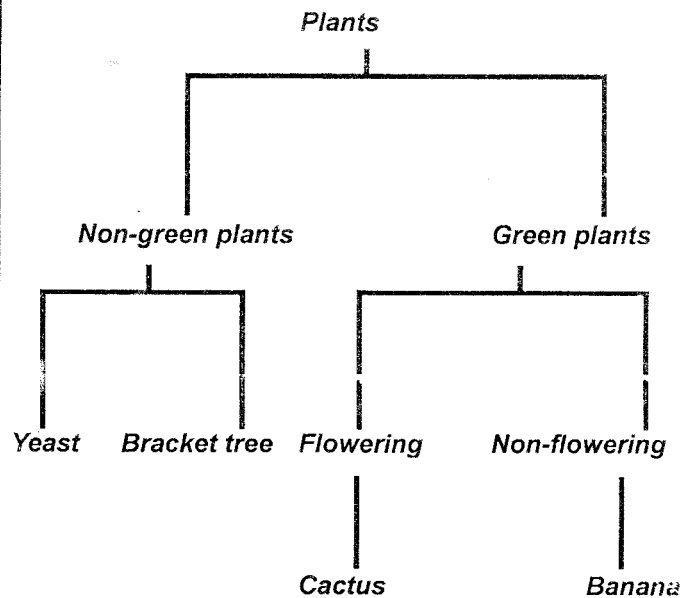
8. Which one of the following lists consists of only drugs that are prohibited in Kenya?
- Khat, cocaine mandrax.
 - Madrax, bhang, heroin.
 - Heroin, beer, cobbler's glue.
 - Beer, bhang, tobacco.
9. Which one of the following is **not** a problem related to teeth?
- Dental floss.
 - Cavity.
 - Bleeding gums.
 - Tooth decay.
10. All the following substances are found in cigarettes when abused **except**?
- Carbon dioxide.
 - Nicotine.
 - Tar.
 - Carbon monoxide.
11. Which one of the following is **not** a function of roots?
- Support
 - Transport
 - Food storage
 - Absorption

12. The diagram below represents a type of pollination.



The type of pollination shown above is

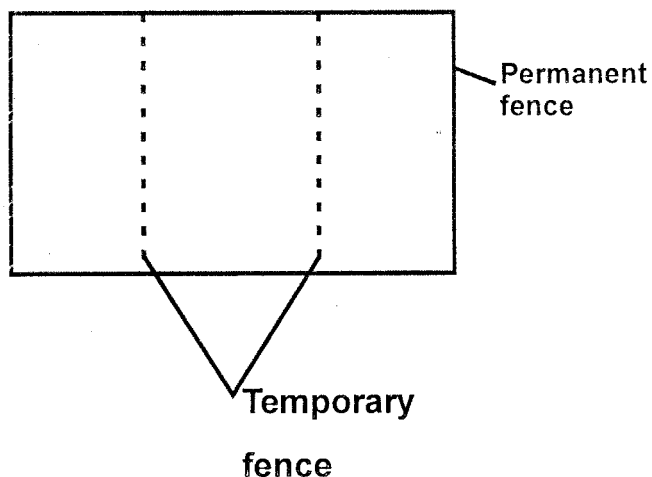
- cross pollination
 - wind pollination.
 - self pollination.
 - Insect pollination.
13. The chart below represents a simple classification of plants.



Which one of the following plants is **not** correctly classified?

- Bracket tree
- Cactus
- Yeast
- Banana

14. What method of grazing is represented by the diagram below?

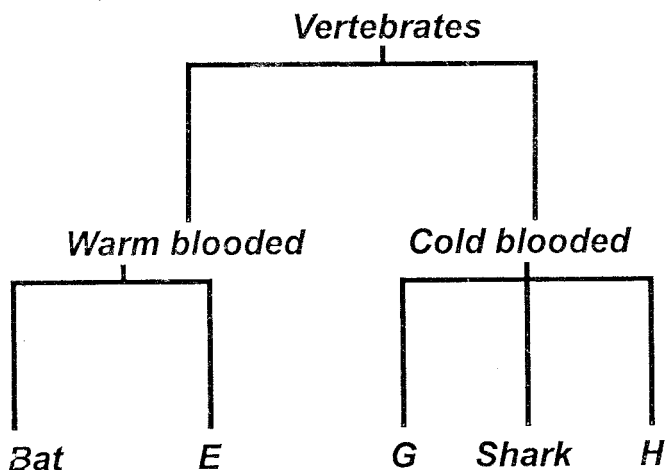


- A. Tethering
- B. Strip grazing
- C. Staff feeding
- D. Paddockging

15. Which of the following crops is correctly classified as cash crop and food crops respectively?

	<i>Cash crops</i>	<i>Food crops</i>
A.	Flax	Wheat
B.	Cocoa	Tea
C.	Barley	Coconut
D.	Sunflower	Cotton

16. The chart below shows a simple classification of vertebrates.



Which animals can fit at the parts marked E, G and H respectively?

	E	G	H
A.	Eagle	Hippopotamus	Snake
B.	Cow	Dolphin	Lizard
C.	Ostrich	Salamander	Turtle
D.	Crocodile	Duck	Newt

17. Which one of the following is not a characteristic of animals? They

- A. reproduce
- B. react to changes
- C. move
- D. make food.

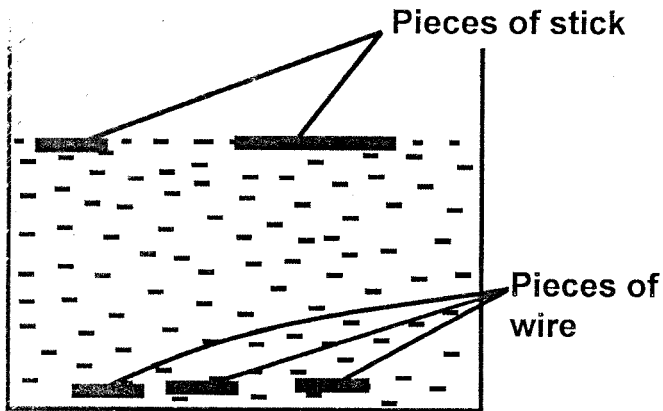
18. Which one of the following statements about solids and gases is true?

- A. They have no definite shape and volume.
- B. They have definite mass and occupy spaces.
- C. They have definite shape and volume.
- D. They have definite volume and mass.

19. It is not true to say that water

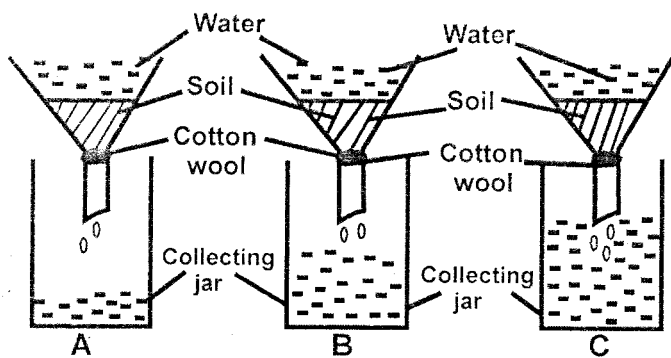
- A. prevents the skin from drying
- B. removes waste from the body
- C. helps in preventing constipation
- D. helps in making blood.

20. Standard 5 pupils set up an experiment as shown below.



The experiment was set to demonstrate that

- A. weight affects floating and sinking
 - B. types of materials affects sinking and floating
 - C. shapes affects floating and sinking
 - D. size affects floating and sinking.
21. The diagram below was set up by Standard 5 pupils to investigate a certain property of soil.



It is not true to say that

- A. soil A has the lowest water retention.
- B. soil B is the best for farming.
- C. soil C has the largest particles.
- D. soil A has the lowest capillarity.

22. A windvane works under the principle that

- A. air occupies space
- B. expansion and contraction of air
- C. air in motion
- D. liquids occupies space.

23. Two pupils, Peter (60kg) and Joel (50kg) were balancing on a see-saw.

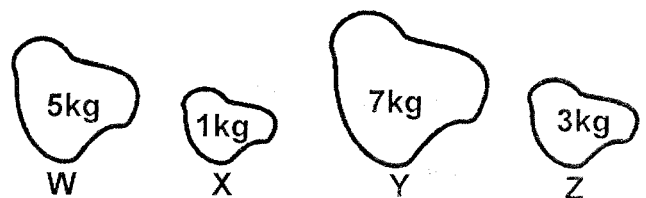
For them to balance, Peter should

- A. stand on the seesaw
- B. move closer to the pivot
- C. move away from the pivot
- D. move the pivot closer to Joel.

24. A weighing balance can be used to measure

- A. mass
- B. blood pressure
- C. weight
- D. temperature.

25. The diagrams below show four stones of different masses that were dropped to the ground at the same time from the same height.



- What order did the stones follow to fall down starting with the first one?
- A. Y, W, Z, X
B. W, Z, X, Y
C. They all fell at the same time.
D. W, X, Y, Z
26. Which one of the following consist of only living components of the environment?
- A. Soil, bacteria, air, moss.
B. Yeast, soil, water, rhino.
C. Athletes foot, light, air, soil.
D. Algae, yeast, bacteria, wasp.
27. Handles of serving spoons are made of plastics because plastic handles
- A. conduct more heat
B. last longer
C. give a firm grip
D. are good insulators.
28. Which one of the following components of the environment occupies the largest parts of the earth's surface?
- A. Water B. Air
C. Soil D. Plants
29. Which of these statements does **not** show how light can be used? To
- A. see clearly.
B. discourage pests.
C. dry cereals.
D. read comfortably.
30. Which one of the following statements about light is **not** true?
- A. Light travels in a straight line.
B. Light is refracted when it falls on rough shinny surfaces.
C. Regular reflection is formed when light falls on shiny smooth surfaces.
D. Light rays bend when they pass through two different materials with different densities.
31. The following are forms of ear protection **except**
- A. ear muffs
B. earplugs
C. ear defenders
D. hearing gadgets.
32. Which one of the following is **not** a use of water in the farm?
- A. Rearing fish.
B. Irrigation.
C. Mixing chemicals.
D. Washing clothes.
33. Which of the following diseases are as a result of drinking contaminated water?
- A. Bilharzia and cholera.
B. Typhoid and malaria.
C. Typhoid and cholera.
D. Whooping cough and cholera.

34. Which one of the following materials is **least** needed when modeling the solar system?

- A. Sand.
- B. Plasticine.
- C. Manila papers.
- D. Pieces of barbed wires.

35. The component of air that occupies the smallest part in the atmosphere is used in all the following **except**

- A. photosynthesis
- B. preserving food
- C. combustion
- D. extinguishing fire.

36. Which one of the following parts of a seed is **not** correctly matched with its function

	Part	Function
A.	Testa	Protect the inner parts of the seed.
B.	Micropyle	From plumule come out of the seed
C.	Hilum	Attach the seed to the fruit
D.	Cotyledon	Store food for the germinating seed

37. Which one of the following lists consist of the correct order of the spectrum starting from the bottom to the top?

- A. Orange, red, green, yellow, indigo, blue, violet.
- B. Red, orange, yellow, green, blue, indigo, violet.
- C. Indigo, violet, green, blue, orange, yellow, red.
- D. Violet, indigo, blue, green, yellow, orange, red

38. Which of the following animal can be grouped together with a spider?

- A. Termite.
- B. Wasp.
- C. Mite.
- D. Crab.

39. Which one of the following materials is **least** useful when forming shadows?

- A. Clear glass.
- B. Mirror.
- C. Milk.
- D. Wood.

40. Which one of the following animals feeds is **not** a pasture?

- A. Lucern.
- B. Guinea grass.
- C. Rhodes grass.
- D. Napier grass.

41. Soil erosion is affected by all the following **factors except**

- A. type of rainfall
- B. slopes of the land
- C. speed of the wind
- D. type of the soil.

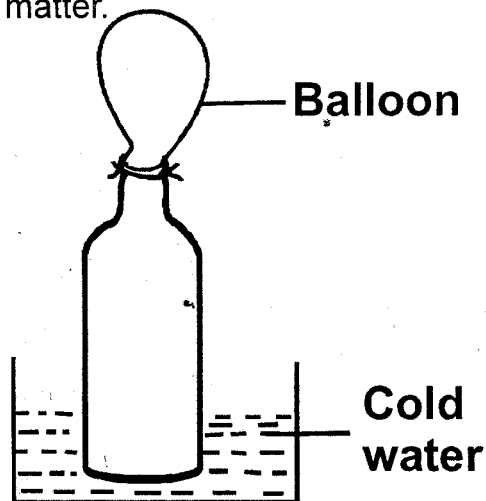
42. Which one of the following is **not** a component of the soil?

- A. Water.
- B. Air.
- C. Organic matter.
- D. Plants.

43. A child with knock-knees should be given a diet rich in all the following **except**

- A. fish
- B. millet
- C. vegetables.
- D. milk

44. The diagram below shows a set-up used to demonstrate a certain aspect of matter.



Which one of the following is **likely** to happen after sometime?

- A. The balloon deflates.
 - B. Water enters the bottle.
 - C. Heat enters the balloon.
 - D. Air enters the balloon.
45. The **most** important information to look at when buying canned fruit is
- A. name of the manufacturer
 - B. type of the fruits
 - C. expiry date
 - D. mass of the container.

46. The transfer of the heat through radiation takes place in

- A. liquids and gases.
- B. gases and vacuum.
- C. solids and gases.
- D. vacuum only.

47. The following are preventive measures for waterborne disease. Which one is **not**?

- A. Proper sanitation.
- B. Avoid overcrowded places.
- C. Boiling water.
- D. Proper hygiene.

48. Which pair of the gases in the atmosphere takes the lowest percentage?

- A. Carbon dioxide and nitrogen.
- B. Inert gases and oxygen.
- C. Carbon dioxide and inert gases.
- D. Inert gases and nitrogen.

49. Which of the following statements is **true**?

- A. Tools should be cleaned after use.
- B. Knives should be soaked together with other utensils before washing.
- C. A stainless knife needs oiling to prevent rusting.
- D. Tools should be stored in dump and cool places.

50. The following are types of force **except**

- A. inertia
- B. weight
- C. friction
- D. pressure