

**READ THESE INSTRUCTIONS CAREFULLY.**

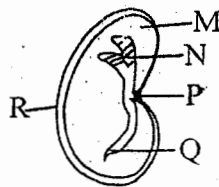
1. You have been given this question paper and a separate answer sheet. The question paper contains 50 questions.
2. Make sure that you have written on the answer sheet.

(i) Your name

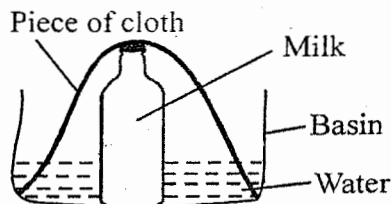
(ii) Name of your school

1. Which of the following method of weed control is the most effective?  
A. Slashing                      B. Uprooting  
C. Digging out                  D. Mulching
2. The number of waves felt as pulses are called \_\_\_\_\_.  
A. heart beats                  B. pulses  
C. wave rate                    D. blood flow
3. A certain drug has the following effects  
(i) *loss of memory*  
(ii) *hallucination*  
(iii) *loss of appetite*  
(iv) *lack of sleep*  
The drug above is **likely** to be:  
A. alcohol                      B. cocaine  
C. khat                          D. tobacco
4. Among the following effects of HIV/AIDS infections. Which one is an effect to the family?  
A. Stigmatization  
B. Lack of strength  
C. Poor performance  
D. loss of income
5. The following are characteristics of a certain animal  
(i) *moist skin*  
(ii) *lay unfertilized eggs*  
The animal is **likely** to be  
A. salamander                  B. ostrich  
C. shark                          D. snake
6. Which drug below is a narcotic drug?  
A. Miraa                          B. Tobacco  
C. Alcohol                        D. Cocaine

7. Which one of the following is a physical change that happen to both boys and girls during adolescent stage?  
A. Hips broaden  
B. wet dreams  
C. producing of sex cells  
D. growth of beards
8. Below is a bean seed

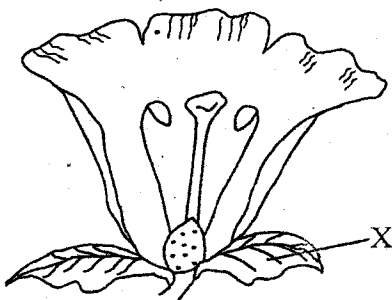


- Which parts make the embryo of a seed?  
A. M and R                      B. N and Q  
C. N and P                      D. M and N
9. The type of soil erosion that is **mainly** noticed by exposing the roots of a plant is called?  
A. gully erosion                  B. splash erosion  
C. rill erosion                    D. sheet erosion
  10. The clouds that are found low in the sky covering large area of the sky also:  
A. is dark grey in colour  
B. indicate fair weather  
C. has flat base  
D. are feathery.
  11. The diagram below was used by std 6 pupils to preserve food.



They were able to preserve the milk due to

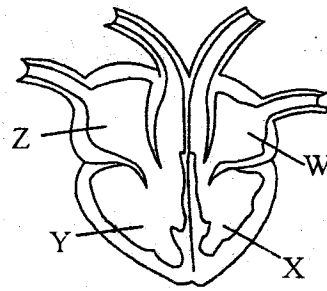
- A. proper covering of milk
  - B. cooling effect on milk
  - C. dehydration of the milk
  - D. putting piece of cloth in water
12. All the animal below are external livestock parasites **except**
- A. flea
  - B. tse tse fly
  - C. hookworms
  - D. tick
13. All the following are major components of environment **except**
- A. plants
  - B. soil
  - C. air
  - D. light
14. Which one of the following is **not** a problem related to teeth?
- A. Tooth decay
  - B. Gingivitis
  - C. Dental floss
  - D. Bad breath
15. Below is a flower



What is the function of part X?

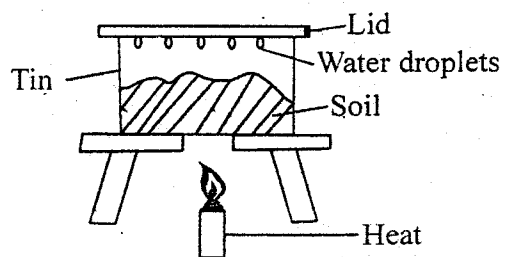
- A. Attract the insects
  - B. Protect the flower in bud stage
  - C. Produce nectar
  - D. Produce the cells
16. Which gas in the air is used by the plants to make proteins?
- A. Carbon dioxide
  - B. Rare gases
  - C. Oxygen
  - D. Nitrogen
17. The component of blood that distribute heat in the body is
- A. plasma
  - B. Red blood cells
  - C. White blood cells
  - D. Platelets

18. Below is a mammalian heart:



Which chamber shown above pumps the blood to the lungs?

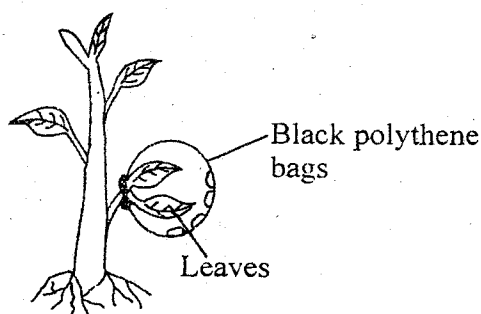
- A. Y
  - B. X
  - C. Z
  - D. W
19. All the following are wrong for both the lizard and ducks **except** one. Which one?
- A. Both are cold blooded
  - B. Both lay unfertilised eggs
  - C. Both have scales
  - D. Both are warm blooded
20. Which one of the following plant is an oil crop?
- A. Sunflower
  - B. Yams
  - C. Irish potatoes
  - D. Sorghum
21. A flower with brightly coloured petals is **not** likely to have
- A. a sticky stigma
  - B. heavy pollen grains
  - C. nectaries
  - D. light pollen grains
22. Grade 4 pupils carried out the following investigation on soil



Which conclusion did they make?

- A. Water has soil
- B. Soil has air
- C. Soil has water
- D. Soil has humus

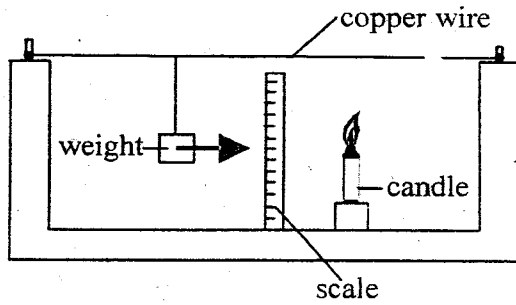
23. Which one of the following is a use of water in the farm?  
 A. Cooking                      B. Cooling machines  
 C. Irrigation                    D. Swimming
24. In human circulatory system, valves are found in the  
 A. heart and veins  
 B. veins and arteries  
 C. capillaries and veins  
 D. capillaries and arteries
25. A clashed bottle top sinks in water because of  
 A. shape                          B. material  
 C. weight                         D. size
26. The tendency of an object to remain stationary or moving is called  
 A. weight                         B. inertia  
 C. static force                  D. state of matter
27. A child had the following signs and symptoms  
 (i) *pale finger nails*  
 (ii) *feeling weak and dizzy*  
 (iii) *short breath*  
 The child is supposed to mostly feed on  
 A. Peas, beans, fish  
 B. Orange, carrots, milk  
 C. Spinach, liver, beans  
 D. Rice, ugali, bread
28. Which one of the following is a natural way of lighting a house  
 A. use of electricity  
 B. use of candle  
 C. use of torch  
 D. transparent roof
29. A weakened form of a germ causing disease introduced into the body is known as  
 A. vaccine                         B. virus  
 C. deworming                    D. bacteria
30. Which is the hottest planet and the largest planet respectively?  
 A. Venus and Earth  
 B. Venus and Jupiter  
 C. Mercury and Jupiter  
 D. Mars and Saturn
31. The following are myths and misconceptions about HIV and AIDS. Which one is **not**?  
 A. HIV victims are always thin  
 B. sex with virgins cures HIV and AIDS  
 C. Traditional herbs cure HIV and AIDS  
 D. The HIV virus is not found in urine
32. The following diseases can be controlled by good use of the toilet. Which one **cannot**?  
 A. Cholera                         B. Bilharzia  
 C. Malaria                         D. Typhoid
33. Std 6 pupils carried out the experiment below



The experiment above was done to investigate

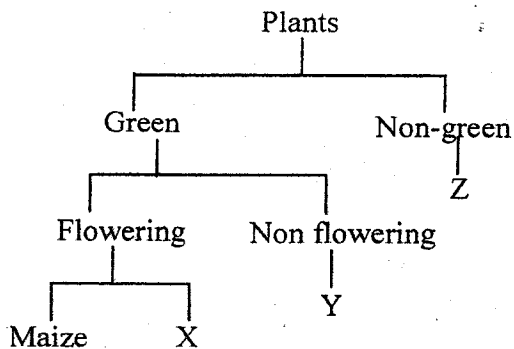
- A. photosynthesis  
 B. Transpiration  
 C. Evaporation  
 D. Respiration
34. Pancreatic juice mixes with food in the \_\_\_\_\_  
 A. stomach                         B. duodenum  
 C. ileum                             D. colon
35. Which one of the plants below uses nitrogen gas to make protein?  
 A. Oats                                B. Millet  
 C. Orange                            D. Green grams
36. A germinating maize seed obtains its food from the \_\_\_\_\_  
 A. cotyledon                        B. endosperms  
 C. plumule                         D. embryo
37. Which one of the following plant stores its food in the stem?  
 A. Cabbage                         B. Irish potato  
 C. Onion                             D. Groundnuts

38. The diagram below was set by std 5 pupils to investigate a certain aspect of matter



The pupils concluded that:

- A. copper conduct heat  
 B. weight makes the copper wire to sag  
 C. matter expand when heated  
 D. the copper wire is elastic
39. Proper lighting of a house is important because of the following **except**
- A. keep pests away  
 B. make reading comfortable  
 C. avoid accidents  
 D. keep house clean
40. Below is a classification of plants



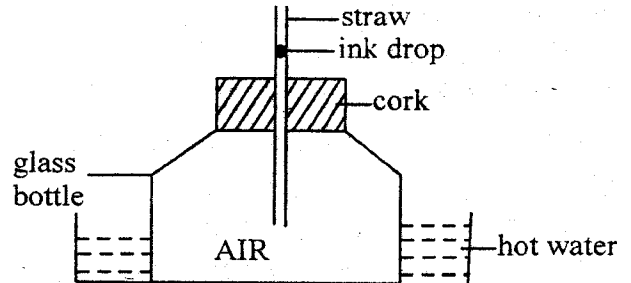
Which plant represents X, Y and Z above?

	X	Y	Z
A.	beans	mould	yeast
B.	millet	mushroom	pine
C.	peas	pine	mushroom
D.	oats	mucor	algae

41. Below are methods of food preservation
- (i) smoking  
 (ii) drying  
 (iii) freezing  
 (iv) salting  
 (v) canning  
 (vi) use of low temperature
- Which method above are both modern and traditional method of food preservation?
- A. i, ii  
 B. ii, vi  
 C. iii, v  
 D. iii, iv
42. Decaying plants and animal helps in improving
- A. amount of humus in soil

- B. number of animal in soil  
 C. inorganic matter in soil  
 D. in soil pollution

43. Which one of the following does not show how plants depends on other plants?
- A. Shade  
 B. Habitats  
 C. Support  
 D. Pollination
44. Std 5 pupils did experiment below



What were the pupils investigating?

- A. Expansion of gases  
 B. Expansion of water  
 C. Expansion of glass bottle  
 D. Expansion of the straw
45. Moving air can be used in the following **except**
- A. winnowing  
 B. carrying soil away  
 C. moving windmills  
 D. drying clothes
46. Which group comprises of personal items only?
- A. Toothpaste, toothbrush, soap  
 B. Handkerchief, towel, knife  
 C. Towel, toothbrush, handkerchief  
 D. Book, nailcutter, soap
47. Which one of the following is **not** a source of water?
- A. Lake  
 B. Tap  
 C. Dam  
 D. Well
48. Fertilization in human reproductive system takes place in
- A. uterus  
 B. ovary  
 C. oviducts  
 D. vagina
49. Which is a harmful animal below?
- A. Termites  
 B. Cat  
 C. Dog  
 D. Fish
50. The amount of rainfall is measured in units called
- A. raingauge  
 B. litres  
 C. millimetres  
 D. millilitres