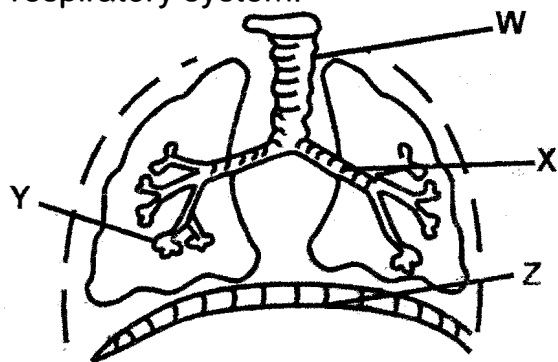


- Which one of the following is a recreational use of water?
 - Irrigation
 - Surfing
 - Making pulps
 - Cooking
- Which one of the following factors makes a bowl made of iron to float on water?
 - Shape
 - Materials
 - Size
 - Weight
- The **main** source of heat and light on earth is
 - electricity
 - fire
 - sun
 - moon
- Pancreatic juice mixes with food in the
 - stomach
 - duodenum
 - large intestines
 - small intestine
- The type of teeth which are shed off first are:
 - pre-molars
 - incisors
 - canines
 - molars
- Which group of foods below are **not** classified as body building foods?
 - Eggs, chicken, pork.
 - Milk, beans, eggs.
 - Oranges, spinach, guavas.
 - Peas, green grams, groundnuts
- The diagram below shows the human respiratory system.

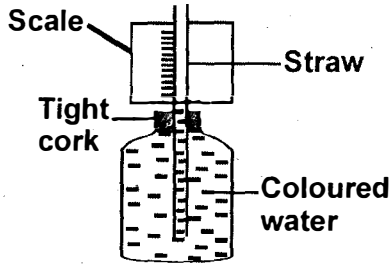


The exchange of gases takes place in the part labelled

- Y
- W
- Z
- X

- A teacher carried a radio into a class and placed it at the middle of the classroom. He told all the pupils to sit round the room. Which property of sound was the teacher demonstrating?
 - Sound is produced by radio.
 - Sound travels in all directions.
 - Vibration causes sound production.
 - Sound travel in a straight line.
- Sinking and floating of an object is **not** affected by
 - shape
 - materials
 - size
 - weight
- Which one of the following characteristics is found in both newt and snake? Both
 - lay eggs
 - breath through gills
 - have moist skin
 - have scales.
- Which of the following groups consist of tuber crops only?
 - Maize, millet, oats.
 - Cassava, groundnuts, yams.
 - Arrow roots, carrots, yams.
 - Beans, peas, green grams.
- Which one of the following takes place in the large intestines during food digestion?
 - Proteins are digested.
 - Digestive juice is produced.
 - Indigestible food is stored.
 - Mineral salts are absorbed.
- Which one of the following is a green non flowering plants?
 - Mushrooms
 - Pine
 - Cactus
 - Maize
- The following are stages of HIV infection. Which one is **not**?
 - Door stage.
 - Window stage.
 - Incubation stage.
 - Full blown AIDS.

15. The diagram below shows a weather instrument.



Which one of the statement below explain how it works?

- A. Air expands when heated and contract when cooled.
- B. Matter occupies space.
- C. Liquids expands when heated and contract when cooled.
- D. Matter has mass and occupies space.

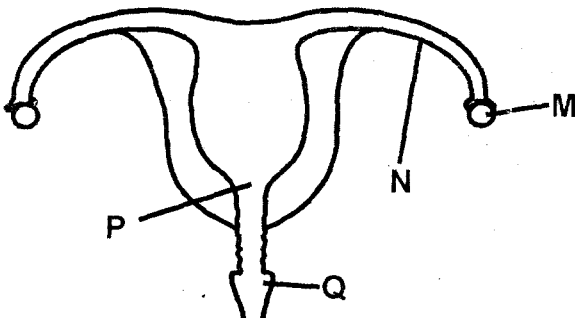
16. Which one of the following is **not** part of female reproductive system?

- A. Urethra
- B. Vagina
- C. Uterus
- D. Ovary

17. Which one of the following physical changes does **not** take place in boys during adolescence stage?

- A. Growth of beards.
- B. Voice breaks.
- C. Experiences wet dreams.
- D. Hips broadens

18. The diagram below shows female reproductive system.



In which part shown above does the fertilization takes place?

- A. P
- B. M
- C. N
- D. Q

19. The clouds that bring heavy rains

- A. are dark grey in colour.
- B. are found high in the sky.
- C. look like bundles of cotton wool.
- D. have oval base.

20. The weed that has black seeds with hooks is called

- A. wondering jew
- B. black jack
- C. sodom apple
- D. oxalis

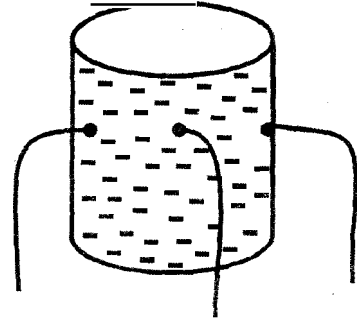
21. Brushing of teeth should always be done

- A. before meals
- B. once in a day
- C. after meals
- D. in the morning only.

22. Which one of the following is **not** characteristic of all animals? They

- A. reproduce
- B. remove wastes
- C. make their own food
- D. respond to changes in environment.

23. The experiment below was done during a Science lesson.



The experiment shows that;

- A. liquids exerts pressure in all directions
- B. pressure in liquids is equal at the same depth
- C. pressure in liquids increases with depth
- D. water flows through holes in a container.

24. In an experiment to determine how water rises in soils, which of the following needs **not** be the same?

- A. Sizes of the tubes.
- B. Amount of the soil.
- C. Amount of the cotton wool.
- D. The type of the soil.

25. The medicines that remains after completing the dose should be

- A. kept safe for future use
- B. given to people with similar illness
- C. donated to orphans
- D. thrown in a pit latrine.

26. Which one of the following is **not** a function of plant roots?
- Making food.
 - Supporting the plant firmly in the soil.
 - Storage of food.
 - Absorption.

27. Four children ate various meals for lunch as shown below.

Joyce - Chicken, fish and chips.

Amina - Ugali, beans and beef.

Tamara - Kales, ugali and milk.

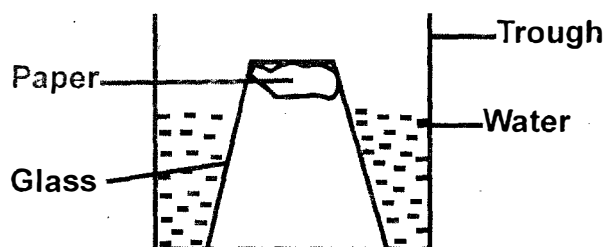
Lucy - Eggs, apple and beans.

Who ate a balanced diet?

- Joyce
 - Mina
 - Tamara
 - Lucy
28. All tools can be maintained through the following methods **except**
- sharpening
 - proper storage
 - proper use
 - cleaning after use.

29. Matter exists in three states. Which one of the following is **not** a state of matter?
- Liquid
 - Gas
 - Solid
 - Vapour

30. Std 5 pupils did the experiment below.



The experiment was used to show that

- matter has mass
 - matter contracts
 - matter occupies space
 - matter expands.
31. The type of soil with the smallest particles also
- makes the longest ribbons
 - is not the best on modelling
 - has large air spaces
 - has the best drainage.

32. A child was seen with the following signs and symptoms.

(i) Lack of breath.

(ii) Tiredness.

(iii) Fatigue.

(iv) Light headaches.

The child was **likely** to be suffering from

- rickets
 - anaemia
 - marasmus
 - kwashiorkor
33. Between 2kg of sand and 2kg of cotton wool, which one occupies a large space?
- 2kg of sand.
 - 2kg of cotton wool.
 - Both are equal.
 - None.

34. Animals move from place to place because of the following **except**
- look for food and water
 - run away from enemies
 - making food
 - looking for shelter.

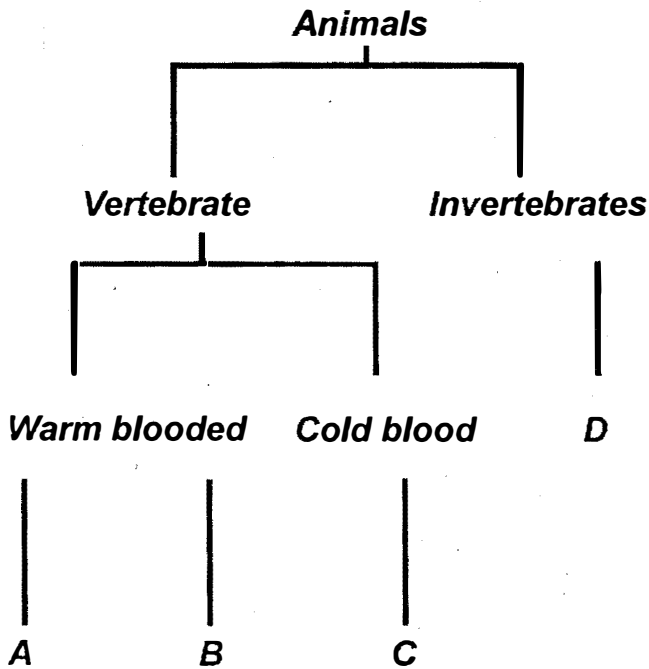
35. The male sex cells are produced in the
- testis
 - scrotum
 - penis
 - ovary.

36. Which one of the following is a special sound
- clapping
 - hooting
 - singing
 - whispering.

37. What is a habitat?
- A place where a plant grows.
 - The house of an animal.
 - The surrounding of a plant.
 - A forest.

38. Which one of the following practices does **not** help in maintaining strong healthy teeth?
- Drinking milk.
 - Eating balanced diet.
 - Eating cakes and sweets.
 - Brushing teeth regularly.

39. The table below shows classification of animals.

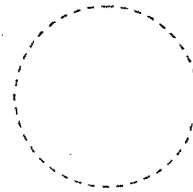


Which animals are represented by the letters above **correctly**?

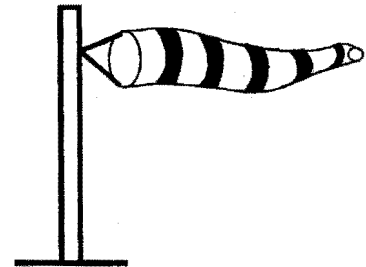
| | A | B | C | D |
|----|-------|---------|-------|----------|
| A. | Birds | Snake | Newt | Mosquito |
| B. | Dog | Ostrich | Snake | Mite |
| C. | Lion | Hen | Dog | Snail |
| D. | Hen | Snake | Zebra | Tick |

40. When breathing in, air is cleaned and moistened in the
 A. nose B. lungs
 C. mouth D. diaphragm
41. Which of the following plants grow in the same area as rice?
 A. Euphorbia.
 B. Yams.
 C. Maize.
 D. Sisal.
42. Heat from the sun reaches to the earth through a process called
 A. conduction B. radiation
 C. convection D. heating
43. The chemicals used to kill weeds in a farm is called
 A. weedcides
 B. insecticides
 C. prion
 D. herbicides

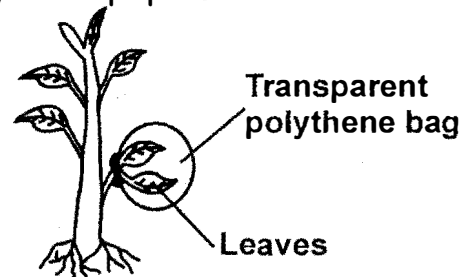
44. Which phase of moon is drawn below?



- A. Crescent B. Full moon
 C. New moon D. Gibbons
- 45: The reproductive part of a plant is called
 A. leaves B. stems
 C. flower D. fruit
46. The weather instrument drawn below is used for



- A. measuring the direction of wind only.
 B. measuring strength and direction of wind.
 C. measuring the speed of the wind.
 D. measuring amount of rainfall.
47. Drugs given to an ill person is called
 A. curative B. pain killer.
 C. vaccines D. stimulants
48. Roughage in the diet is important because it helps in
 A. constipation
 B. food absorption
 C. food digestion
 D. emptying the bowels.
49. The experiment below was conducted by Std 5 pupils.



- The pupils were investigating
 A. photosynthesis in plants.
 B. transpiration in plants.
 C. absorption in plants.
 D. evaporation.
50. Which animals moves by a gliding?
 A. Chameleon B. Snake
 C. Snail D. Caterpillar