

READ THESE INSTRUCTIONS CAREFULLY.

1. You have been given this question paper and a separate answer sheet. The question paper contains 50 questions.

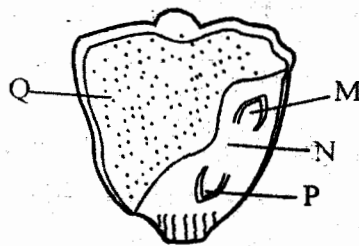
2. Make sure that you have written on the answer sheet.

(i) Your name

(ii) Name of your school

- The following are part of male reproductive system **except**
A. urethra B. testis
C. uterus D. penis
- Which one of the following expands most when heated?
A. Gases B. Liquids
C. Solids D. Iron metal
- What is pollination?
A. Transfer of pollen grains from anthers to the ovary of a flower
B. Transfer of pollen grain from anthers to the stigma
C. The joining of the pollen grains and the ovules in a flower
D. The transfer of pollen grain from the stigma to the ovary through style
- Which one of the following shows the correct stages of HIV and AIDS
A. Full blown → symptomatic → asymptomatic → window
B. Window → incubation → asymptomatic → fullblown
C. Incubation → window → asymptomatic → fullblown
D. Window → incubation → symptomatic → fullblown
- Which one of the following is used to compare the quantity of matter in a substance?
A. Spring balance
B. Thermometer
C. Raingauge
D. Beam balance

- We care for the animal in the following ways
A. giving them dirty water
B. letting them free in danger
C. beating them
D. building a kennel for dogs
- Which one of the following is not a water borne disease?
A. Bilharzia
B. Cholera
C. Tuberculosis
D. Typhoid
- Study the maize seed below

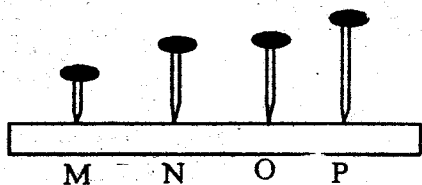


Name the parts shown above

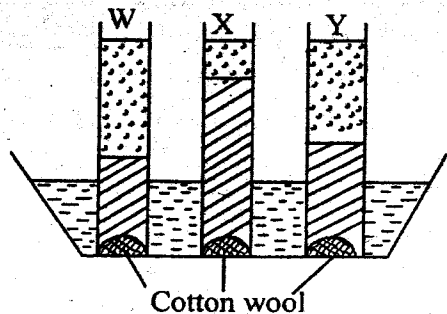
	M	N	P	Q
A.	plumule	radicle	cotyledon	endosperm
B.	Radicle	cotyledon	plumule	endosperm
C.	cotyledon	endosperm	radicle	plumule
D.	Plumule	cotyledon	radicle	endosperm

- Anything that has mass and also occupies space is called
A. mass B. matter
C. solids D. air

10. In the figure below which nail produced the lowest sound when hit by a metal spoon

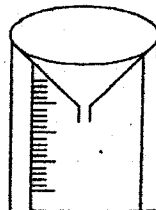


- A. O
B. N
C. P
D. M
11. Which diseases are immunised at birth in an infant?
A. Polio and measles
B. Tuberculosis and polio
C. Diphtheria and whooping cough
D. Tetanus and polio
12. Which animal is warm blooded, lays fertilized eggs and has mammary glands?
A. Bat
B. Whale
C. Ostrich
D. Duck billed platypus
13. Which is the first planet from the sun?
A. Mercury
B. Venus
C. Earth
D. Mars
14. Which tooth is used for tearing food?
A. Canine
B. Incisor
C. Premolar
D. Molars
15. The main source of heat and light on earth is
A. electricity
B. sun
C. firewood
D. stars
16. Animals move from place to place. Which one of the following is **not** a reason why animals move?
A. To mate
B. Look for food
C. Look for predators
D. for shelter
17. Std. 5 pupils carried out the experiment below



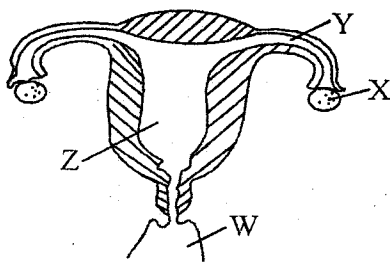
Which soil above was taken from an antihill?

- A. W
B. X
C. Y
D. None
18. A piece of wood float on water while a pin sink in the same water. This is due to their differences in
A. materials
B. shapes
C. weight
D. sizes
19. Akinyi was found to have the following signs and symptoms
(i) rapid heart beats
(ii) whitish finger nails
(iii) fainting easily
She was advised by the doctor to eat plenty of
A. proteins
B. vitamin D
C. Calcium
D. Iron
20. Which statement is **not** correct about the instrument drawn below



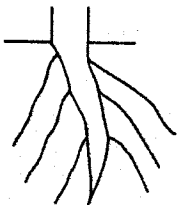
- A. it is dug into the ground to prevent evaporation
B. it is raised to prevent splashing water into funnel
C. measurement should be taken at a regular intervals
D. it should be placed away from buildings under the trees
21. Grade 4 pupils put soil in a tin, covered it with a lid and placed it on fire. What were they investigating?
A. Air in soil
B. Water in soil
C. Humus in soil
D. Living things in soil
22. In a female reproductive system fertilization takes place in the
A. Ovary
B. Oviduct
C. Uterus
D. Vagina

23. Which one of the following physical changes takes place in girls only during adolescence stage?
 A. Increase in weight
 B. Chest broadens
 C. Wet dreams
 D. Enlargement of breasts
24. HIV and AIDS can be spread through the following ways **except**
 A. sexual intercourse
 B. blood transfusion
 C. sharing utensils
 D. breast milk
25. One kilogram of salt and one kilogram of cotton wool have the same
 A. mass
 B. volume
 C. material
 D. density
26. The diagram below shows female reproductive system



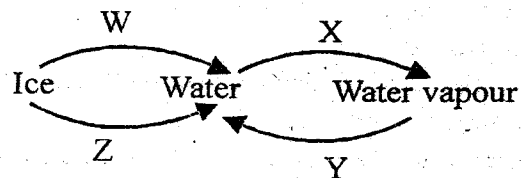
In which part does the development of the baby take place

- A. Z
 B. X
 C. Y
 D. W
27. Large volume of water is **best** stored in
 A. tanks
 B. dams
 C. taps
 D. pipes
28. Which plants is **likely** to have the type of root system drawn below?



- A. Carrot
 B. Maize
 C. Wheat
 D. Millet
29. Which plant below grows in an area without enough water?
 A. Rice
 B. Water lily
 C. Water hyacinth
 D. Cactus

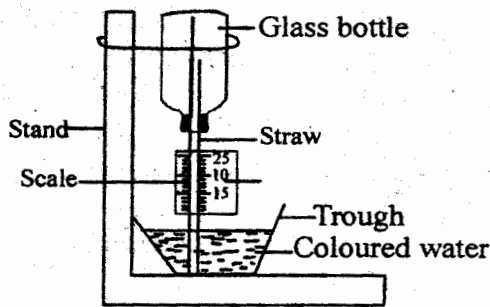
30. Which statement is true about air as a gas?
 A. Have definite shape
 B. Have definite mass
 C. Have definite volume
 D. Take shape of the solids
31. Which one of the following correctly matches the animal with the product
 A. Goat → milk and wool
 B. Cow → milk and mutton
 C. Pig → hides and pork
 D. Sheep → mutton and wool
32. Which one of the following is **not** a reason for proper storage of the tools?
 A. For longevity
 B. For tidiness
 C. For proper use
 D. For safety
33. The soil that makes the longest ribbon is also likely to
 A. crack when dry
 B. be rich in humus
 C. have the best drainage
 D. have large air spaces
34. Which one of the following is observed in the sky during the day and night?
 A. Moon and stars
 B. Moon and clouds
 C. Sun and clouds
 D. Stars and clouds
35. Which one of the following materials is **not** needed when cleaning a toilet?
 A. Ash
 B. Water
 C. Hard brush
 D. Disinfectant
36. Which one of the following crop is a fruit and a vegetable?
 A. Tomato
 B. Carrot
 C. Onion
 D. Irish potato
37. The diagram below shows the changes of states of matter



Which letter represents the process of condensation?

- A. W
 B. X
 C. Z
 D. Y

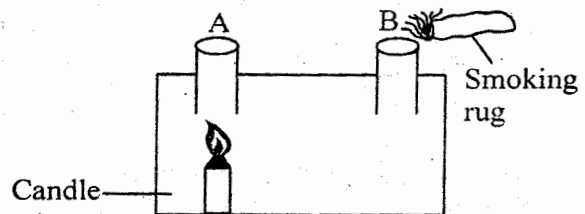
38. In a flower fertilization takes place in the
 A. fruit B. ovary
 C. stigma D. anthers
39. What is the common characteristics of lizard, toad and an ostrich?
 A. Have scales.
 B. Moist skin.
 C. Lay eggs.
 D. Cold blooded.
40. Which group below comprises the plants that do not make their own food?
 A. Mushroom, puffballs, moulds
 B. Ferns, moss, algae
 C. Pine, cedar, cypress
 D. Toadstool, mushrooms, ferns
41. When objects vibrate they produce
 A. light B. heat
 C. electricity D. sound
42. Which one of the following is not part of alimentary canal?
 A. Anus B. Gullet
 C. Liver D. Duodenum
43. Below is a weather instrument



Which statement is **not** true about the above instrument?

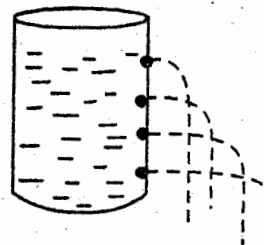
- A. It is used to measure temperature in degrees celcius
- B. When hot the level of water in the straw drops
- C. When cold the level of water in the trough drops
- D. The coloured water expand when hot and contract when cold
44. When water is added to the soil we observe
 A. water bubbles
 B. humus in the soil
 C. air in the soil
 D. soap bubbles

45. Which group of foods below shows a balanced diet?
 A. Maize, beans, beef
 B. Kales, ugali, milk
 C. Eggs, chips, chicken
 D. Irish potato, cabbage, rice
46. Which one of the following is important when handling food eaten raw?
 A. Proper washing of hands after eating
 B. Clean food after cutting
 C. Proper cooking of the food
 D. Proper cleaning of utensils used
47. The following are characteristics of flowers
 (i) *stick stigma*
 (ii) *dull petals*
 (iii) *heavy stick pollen grains*
 (iv) *feathery stigma*
 Which characteristics are found in a flower that has nectar?
 A. ii and iv B. i and iv
 C. i and iii D. iii and iv
48. Which one of the following is **not** required for seed germination?
 A. Air B. Water
 C. Heat D. Soil
49. Study the set-up below



The set up above is used to demonstrate
 A. convection in solids
 B. heat transfer in gases
 C. convection in liquids
 D. production of heat by burning candle

50. The set up below was used by std 5 pupils



What did they conclude from the set up?
 A. Pressure in liquid is equal at the same depth
 B. Liquids exerts pressure in all directions
 C. Pressure in liquids increases with depth
 D. Pressure in liquids decreases with depth