

STANDARD 8 – CODE 001 – 2020

SCIENCE

Time: 1 hour 40 minutes

READ THESE INSTRUCTIONS CAREFULLY

Your Index
Your N
Name of Your

1. Which one of the following clouds are found high in the sky and have a flat base?
 - A. Nimbus
 - B. Cumulus
 - C. Stratus
 - D. Cirrus

2. Draining stagnant water can help prevent the spread of:
 - A. typhoid and malaria
 - B. cholera and bilharzia
 - C. typhoid and cholera
 - D. bilharzia

3. Convection is a mode of heat transfer in:
 - A. liquids only
 - B. gases only
 - C. liquids and solids
 - D. liquids and gases

4. Which of the following is a social effect of drug abuse?
 - A. Drug induced accidents
 - B. Withdrawal
 - C. Addiction
 - D. Memory loss

5. The component of blood that helps in clotting is:
 - A. plasma
 - B. platelets
 - C. red blood cells
 - D. white blood cells

6. The type of animal feed grown, cut and fed to animals is known as
 - A. pasture
 - B. concentrate
 - C. fodder
 - D. pasture

7. Which of the following is not a source of current electricity?
 - A. Windmills
 - B. Car battery
 - C. Geothermal wells
 - D. Water dams

8. The processes involved in changing ice to vapour are:
 - A. melting and condensation
 - B. evaporation and condensation
 - C. freezing and evaporation
 - D. melting and evaporation

9. Rays of Light appear bend when they move from the transparent medium to another due to
 - A. bouncing
 - B. dispersion
 - C. refraction
 - D. splitting

10. The component of air used in photosynthesis is also used in:
 - A. germination
 - B. fire extinguisher
 - C. light bulbs
 - D. making proteins

11. Which of the following is a biotic component of the environment?
 - A. Air
 - B. Plants
 - C. Soil
 - D. Water

12. Children who suffer from Kwashiorkor and anaemia lack of _____ and _____ respectively.
 - A. iron and proteins
 - B. calcium and iron
 - C. proteins and iron
 - D. enough food and iron

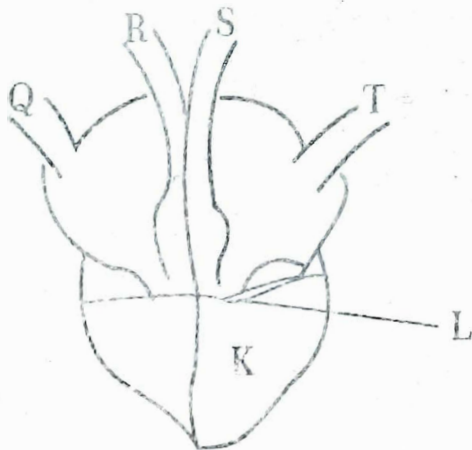
13. The pistil of a flower consist of
- petals, stigma, style and ovary
 - style, stigma, ovary and ovules
 - filament, pollen grains and anthers
 - sepals, petals, style and ovary

14. Plants depend of each other following except?
- Food
 - Support
 - Shade
 - Habitat

15. Which of the following crop pests cuts the stems of young plants?
- Cutworms
 - Stalk borer
 - Aphids
 - Termites

16. Which of the following methods of controlling animal parasites can be used for both ticks and liver flukes?
- Deworming
 - Spraying
 - Rotational grazing
 - Dipping

Use the diagram to answer questions 17 to 19.



17. The two vessels that carry bright red blood are labeled?
- Q, R
 - Q, T
 - S, T
 - R, S

18. The features marked L are useful because they
- allow backflow of blood
 - help in blood clotting
 - help in pumping of blood
 - prevent blood from flowing backwards

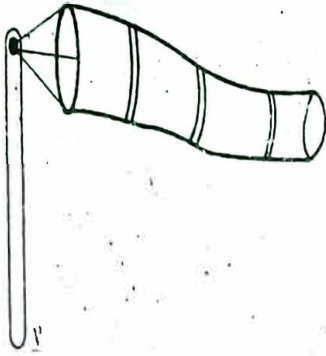
19. The chamber marked K has thick muscle wall mainly because:
- it receives a lot of blood
 - it pumps blood to all parts of the body
 - it receives deoxygenated blood
 - it pumps oxygenated blood

20. Which of the following drugs is prohibited in Kenya?
- Bhang
 - Alcohol
 - Miraa
 - Tobacco

21. Which method of preserving food will keep fish fresh for a long time?
- Salting
 - Freezing
 - Drying
 - Smoking

22. The soil that cracks when dry also:
- has large air spaces
 - is sticky when wet
 - is good for farming
 - has a good drainage

23. Which of the following is true about the instrument below?

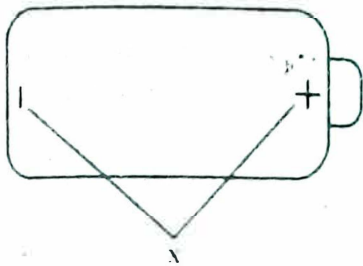


- A. It is used to tell the speed of wind
 - B. It points where the wind is blowing
 - C. It has two open ends
 - D. It should be kept under shade
24. Which of the following shows using water sparingly?
- A. Harvesting rain water
 - B. Using sprinkler irrigation
 - C. Repairing leaking pipes and tanks
 - D. Using water that has been used to wash clothes to mop the floor
25. Which of the following is a myth about HIV/AIDS?
- A. AIDS has a cure.
 - B. HIV/AIDS is spread through sexual intercourse
 - C. HIV/AIDS patients are always thin
 - D. HIV/AIDS can affect anyone
26. All the following are major nutrients required by plants except?
- A. Manganese
 - B. Phosphorus
 - C. Nitrogen
 - D. Potassium
27. The most abundant component of blood is:
- A. platelets
 - B. plasma
 - C. red blood cells
 - D. white blood cells

28. Which of the following groups of crops are fibre crops?

- A. Beans, Peas, Maize
 - B. Cotton, sisal, flax
 - C. Potatoes, Cassava, Carrots
 - D. Maize, wheat, rice
29. Which one of the following is not found in tobacco smoke?
- A. Caffeine
 - B. Nicotine
 - C. Tar
 - D. Carbon monoxide
30. Which of the following cannot be measured using a spring balance?
- A. Weight
 - B. Friction
 - C. Magnetism
 - D. Mass
31. The following small animals belong to the same group except?
- A. Flea
 - B. Mite
 - C. Spider
 - D. Tick
32. All the following are characteristics of an insect pollinated flower except?
- A. Have scent
 - B. Produce nectar
 - C. Feathery stigma
 - D. Brightly coloured petals

33. The two parts of a dry cell labelled x are called?



- A. Poles
 B. Terminals
 C. Circuits
 D. Ends
34. The following are physical changes in both boys and girls during adolescent except?
- A. Production of sex cells
 B. Broadening of hips
 C. Pimples may appear
 D. Growth of public hair
35. In female human beings ovulation happens in the?
- A. oviduct
 B. ovary
 C. uterus
 D. cervix
36. The main vein is the
- A. pulmonary vein
 B. aorta
 C. vena cava
 D. pulmonary artery
37. Which one of the following has definite volume and mass only?
- A. Wood
 B. Water
 C. Air
 D. Vapour

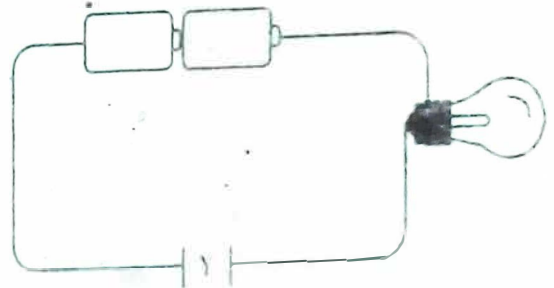
38. Which of the following materials is opaque?

- A. Kerosene
 B. Windscreen
 C. Mirror
 D. Frosted glass

39. The type of soil erosion that occurs on animal paths is:

- A. rill erosion
 B. sheet erosion
 C. splash erosion
 D. gulley erosion

40. The diagram below represents a simple circuit. Which of the following materials cannot make the bulb to light when placed at point Y?



- A. Copper
 B. Razor blade
 C. Graphite
 D. Glass

41. Which of the following stores food in the stem?

- A. Cassava
 B. Irish potato
 C. Carrot
 D. Arrow root

42. The gas that is used by legumes to make proteins is approximately:

- A. 78%
 B. 0.03%
 C. 21%
 D. 0.97%

43. Which of the following is not a water pollutant?

- A. Raw sewage
- B. Acid rain
- C. Oil spills
- D. Tobacco smoking

44. Which of the following is not a special sound?

- A. Car hooting
- B. Fire siren
- C. Baby crying
- D. Bell ringing

45. All the following are characteristics of amphibians except?

- A. Have external fertilization
- B. Have a backbone
- C. Have scales on their bodies
- D. Lay eggs

46. Which of the following is correctly matched with their products?

- A. Sheep - mutton and mohair
- B. Cow - beef and mohair
- C. Goat - mutton and mohair
- D. Poultry - egg and wool

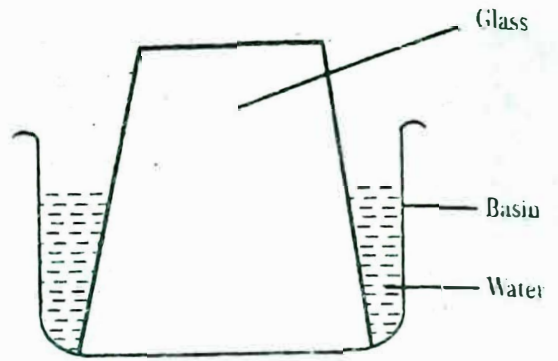
47. Which of the following can be attracted by a magnet?

- A. Plasmodium
- B. Aluminum rod
- C. Iron nails
- D. Cobalt filings

48. Malaria is a communicable disease caused by:

- A. plasmodium
- B. female anopheles
- C. stagnant water
- D. mosquito

49. The water did not enter the glass because:



- A. air exerts pressure
- B. water is heavier
- C. air occupies space
- D. air expands on heating

50. The best method of controlling weeds is:

- A. digging them out
- B. spraying with herbicides
- C. uprooting them
- D. burning them