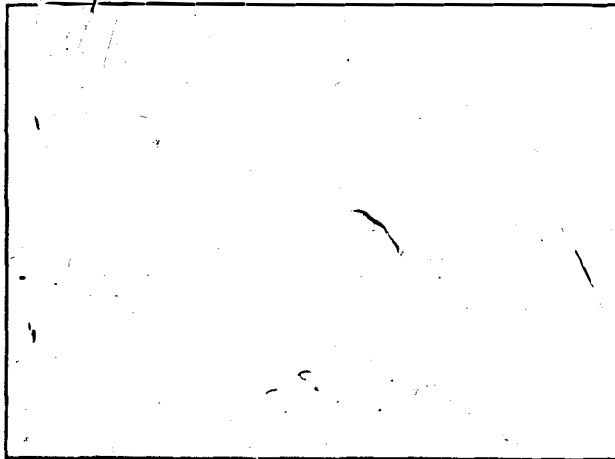


# COMPETENCY BASED CURRICULUM ASSESSMENT

## Grade ONE -YEAR 2020 CRE ACTIVITIES

NAME: .....SCHOOL: .....

1. Draw and colour yourself.  
(5 marks)



2. Group the plants and animals below. (10 marks)

- potato    cabbage    tomatoes    sugarcane  
 cow    banana    guava    pineapple  
 sheep    chicken    rabbit    elephant  
 onion    donkey    goat    lion

Plants	Animals
1.	1.
2.	2.
3.	3.
4.	4.
5.	5.

3. Draw and colour things that God created. (6 marks)

stars	plants	sun

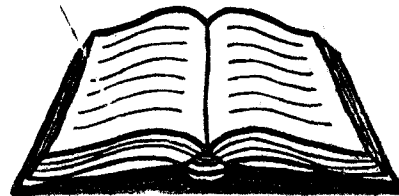
4. Write three things you can share at home. (3mks)

\_\_\_\_\_

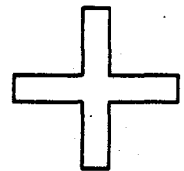
\_\_\_\_\_

\_\_\_\_\_

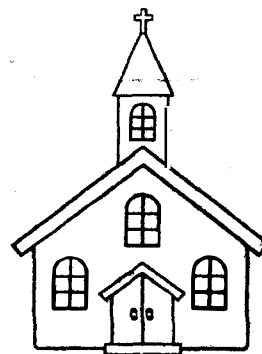
5. Name the following pictures.



\_\_\_\_\_



\_\_\_\_\_



\_\_\_\_\_

5. Write 3 members of a nuclear family.

---

---

---

7. Personal items are things we \_\_\_\_\_ share.  
**(do, do not)**

8. Fill in the gaps. (6mks)

M \_\_\_\_\_ tth \_\_\_\_\_ w

G \_\_\_\_\_ sp \_\_\_\_\_ l

W. \_\_\_\_\_ rd

B \_\_\_\_\_ bi \_\_\_\_\_

H \_\_\_\_\_ ly

M \_\_\_\_\_ rk

9. \_\_\_\_\_ killed Goliath.  
**(Moses, David)**

10. We were all created by \_\_\_\_\_.

11. God loves \_\_\_\_\_ children.  
**(noisy, obedient)**

12. God is our father in \_\_\_\_\_.  
**(earth, heaven)**

13. Jesus was born in a town called \_\_\_\_\_.  
**(Nazareth, Bethlehem)**

14. Bethlehem was a town in \_\_\_\_\_.  
**(Jerusalem, Judea)**

15. Find the following words in the puzzle.

genesis

mark

john

bible

god

pray

g	e	n	e	s	i	s
o	p	r	a	y	o	x
d	j	o	h	n	n	x
m	a	r	k	v	i	v
b	i	b	i	e	e	t