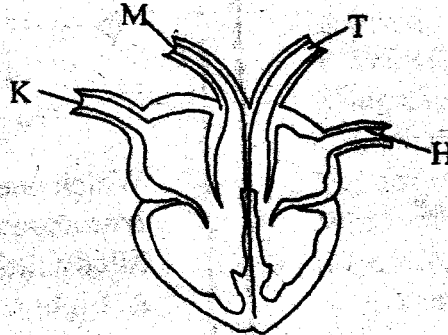


STD. 7 - END OF TERM 1 - YEAR 2020

SCIENCE

Time : 1 Hour 40 Mins

1. The following diagram shows a section of a mammalian heart

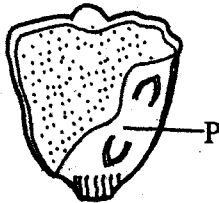


Name the blood vessels marked K, M, T and H respectively

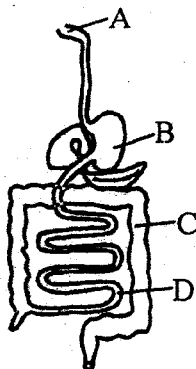
K	M	T	H
A. Vena cava	pulmonary artery	aorta	pulmonary vein
B. Aorta	vena cava	pulmonary vein	pulmonary artery
C. Pulmonary artery	aorta	vena cava	pulmonary vein
D. Vena cava	aorta	pulmonary vein	pulmonary artery

- | | |
|----------------------------------------------------------------------------------------------------------------------------------------------------------------------------------------------------------------------------------------------------------------------------------------------------------------------------------------------------------------------------------------------------------------------------------------------------------------------------------------------------------------------------------------------------------------------------------------------------------------------------------------------------------------------------------------------------------------------------------------------------------------------------------------------------------------------------------------------------------------------------------------|----------------------------------------------------------------------------------------------------------------------------------------------------------------------------------------------------------------------------------------------------------------------------------------------------------------------------------------------------------------------------------------------------------------------------------------------------------------------------------------------------------------------------------------------------------------------------------------------------------------------------------------------------------------------------------------------------------------------------------------------------------------------------------------------------------------------------------------------------------------------------------------------------------------------------------------------------------------------------|
| <p>2. Legumes and cereals are mainly harvested and preserved by</p> <p>A. canning B. salting
C. freezing D. drying</p> <p>3. Which one of the following is very important to check when buying canned food?</p> <p>A. Method of preservation
B. Expiry date
C. The company of manufacture
D. Manufacture date</p> <p>4. Which one of the following parts of the female reproductive system is not correctly matched with its function?</p> <p>A. Cervix - where the ovum develops into a baby
B. Ovary - produces ovum
C. Birth canal- allows the baby to pass through during birth
D. Oviduct - where fertilisation occurs</p> <p>5. Which pair of the following diseases consists of water-borne diseases?</p> <p>A. Whooping cough and Malaria
B. Cholera and Typhoid
C. Malaria and Polio</p> | <p>D. Typhoid and Tuberculosis</p> <p>6. Transfer of the heat in both gases and liquids is mainly through</p> <p>A. convection only
B. conduction only
C. radiation only
D. both radiation and convection</p> <p>7. Which one of the following animal feeds does not provide livestock with energy?</p> <p>A. Molusses B. Honey
C. Desmodium D. Wheat bran</p> <p>8. Undigested food in the alimentary canal is stored in the</p> <p>A. rectum B. duodenum
C. stomach D. large intestine</p> <p>9. Which one of the following mammals does not give birth?</p> <p>A. Kangaroo B. Duck-billed platypus
C. Whale D. Seal</p> <p>10. The common characteristics in fish, birds and reptiles is</p> <p>A. where they live
B. breathing through gills
C. all have scales
D. laying fertilised eggs</p> |
|----------------------------------------------------------------------------------------------------------------------------------------------------------------------------------------------------------------------------------------------------------------------------------------------------------------------------------------------------------------------------------------------------------------------------------------------------------------------------------------------------------------------------------------------------------------------------------------------------------------------------------------------------------------------------------------------------------------------------------------------------------------------------------------------------------------------------------------------------------------------------------------|----------------------------------------------------------------------------------------------------------------------------------------------------------------------------------------------------------------------------------------------------------------------------------------------------------------------------------------------------------------------------------------------------------------------------------------------------------------------------------------------------------------------------------------------------------------------------------------------------------------------------------------------------------------------------------------------------------------------------------------------------------------------------------------------------------------------------------------------------------------------------------------------------------------------------------------------------------------------------|

11. Which of the following foods form a balanced diet?
 A. Ugali, rice and fish
 B. Kales, rice and oranges
 C. Meat, potatoes and mangoes
 D. Fish, meat and potatoes
12. Study the diagram of a maize seed shown below

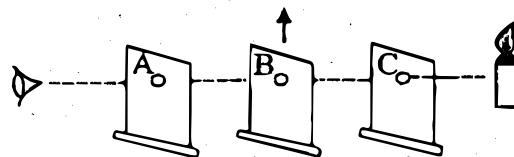


- The part marked P is made up of
 A. endosperm and embryo
 B. embryo and plumule
 C. radicle and embryo
 D. plumule and radicle
13. The leaves of a plant are useful in all the following ways **except**
 A. absorption of water
 B. exchange of gases
 C. manufacture of food
 D. storage of food in some plants
14. At what point marked A, B, C and D of the alimentary canal does the digestion of starch start



15. A boy had the following signs and symptoms
 (i) blood stains in urine and stool
 (ii) skin rashes on the face
 (iii) fever that lasted for a few weeks
 (iv) itching of the bowels
 The boy was likely to be suffering from
 A. Cholera
 B. Typhoid
 C. Bilharzia
 D. Malaria

16. Which method of grazing makes use of temporary fences?
 A. Herding B. Zero grazing
 C. Paddock D. Strip grazing
17. Class six pupils carried out an experiment as shown below



- Which one of the following statements is true about what will happen if board B is lifted a little as shown with the arrow?
 A. Light will still be seen since it travels in a straight line
 B. No light will be seen by the eye
 C. Light will only pass through the first and last hole
 D. Light will still be seen since it travels in all directions
18. Which of the following foods would give both vitamins and carbohydrates if eaten at different states?
 A. Pawpaw B. Rice
 C. Banana D. Meat
19. During pollination, the pollen grains move from the
 A. stigma to anthers
 B. anthers to the ovary
 C. anthers to the stigma
 D. stigma to the ovary
20. The following are processes that occur during germination
 (i) the plumule forms a shoot
 (ii) the seed coat bursts open
 (iii) the seed absorbs water through the micropyle
 (iv) the radicle grows to form a tiny root
 (v) the seed swells up
 Which of the following shows the correct order in which the above processes occur during germination?
 A. iii, iv, v, ii and i
 B. ii, iii, iv, v and i
 C. ii, v, iv, iii and i
 D. iii, v, ii, iv and i

21. Which planet is also known as the evening star?
 A. Venus B. Neptune
 C. Jupiter D. Mars
22. The clouds that are white and puffy are known for
 A. having a flat base
 B. bringing rainfall
 C. being dark grey
 D. lying low in the sky
23. Which one of the following is **not** an agent of pollination?
 A. Soil B. Water
 C. Wind D. Locusts
24. The diagram below represents a railway line



Which one of the following is the reason why there is a gap at the joint?

- A. It helps in stopping the train
 B. It helps in speeding up the train
 C. To allow for expansion and contraction
 D. To reduce wastage of materials
25. Which one of the following is common in all invertebrates?
 A. They give birth
 B. They are warm -blooded
 C. They live in water
 D. They do not have a backbone
26. Study the diagram of a tooth below

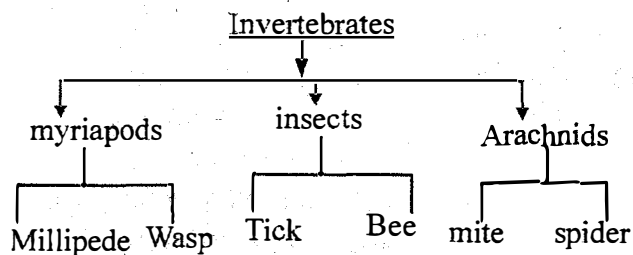


How many such teeth can be found on the lower jaw of an adult person?

- A. Two B. Three
 C. Four D. Six
27. Which one of the following is **not** part of a pistil of a flower?
 A. ovary B. style
 C. filament D. stigma

28. Which statement among the following is **incorrect** about capillaries?
 A. They are found all over the body
 B. Have very thin single cell walls
 C. They connect veins and arteries
 D. Blood flow in them under high pressure
29. Which of the following is a social effect of drug abuse?
 A. Marital conflicts
 B. Impaired judgement
 C. Addiction
 D. Lack of concentration
30. Which of the following is **not** a misconception about HIV/AIDS?
 A. HIV and AIDS is one and the same thing
 B. Old people above 60 years old cannot get HIV and AIDS
 C. HIV has no cure
 D. Disabled people cannot get infected with HIV and AIDS
31. Khat is another name for
 A. bhang B. cocaine
 C. miraa D. mandrax
32. Green plants manufacture food using
 A. soil B. carbon dioxide
 C. oxygen D. nitrogen
33. Which one of the following is the term given to the surrounding of a living organism?
 A. Habitat B. Jungle
 C. Environment D. Forest
34. Climbers have all the following features **except**
 A. hooks
 B. tendrils
 C. climbing by twining
 D. leaves that are purple in colour
35. Which one of the following is **not** a leguminous plant?
 A. Peas B. Beans
 C. Maize D. Groundnuts
36. Which organism in the following habitat is a secondary consumer?
Plants → mouse → snake → vulture
 A. plants B. mouse
 C. snake D. vulture

37. Which of the following is **not** an effect of pests on crops?
- Low yields
 - Reduced quality of produce
 - High yields
 - Causes diseases to consumers
38. Which pest among the following is **incorrectly** matched with damage it causes to plants?
- Army worms - they fed on leaves
 - Locust - eat leaves and young stems of plants
 - Stalkborers - suck sap of the leaves and fruits
 - Cutworms - cut stems of young plants thus killing the crop
39. Excessive chewing of miraa leads to
- lung cancer
 - difficulty in breathing
 - addiction
 - a false feeling of well being to the user
40. Study the diagram below on simple classification of invertebrates



Which two animals are **wrongly** matched?

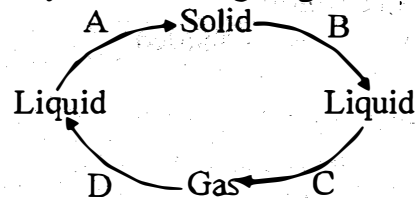
- Wasp and tick
 - Spider and millipede
 - Wasp and bee
 - Bee and spider
41. The type of plant illustrated on the diagram is an example of a



- non-green plant
 - non-flowering plant
 - flowering plant
 - green plant
42. Which one of the following materials has no fixed volume and shape?
- Water
 - Wood
 - Stone
 - Sand

43. Carbon dioxide can be used in various ways as listed below **except**
- during germination
 - fire extinguishers
 - preserving soft drinks
 - during photosynthesis
44. The key provider of all energy is the
- sun
 - water
 - food
 - fuel
45. Which component of tobacco causes cigarette addiction on the user?
- Tar
 - Ash
 - Nicotine
 - Carbon dioxide
46. Which chamber of the heart has thick strong muscles?
- Left auricle
 - Right ventricle
 - Right auricle
 - Left ventricle
47. Which one of the following animals lays eggs, has a constant body temperature and has scales?
- Bat
 - Tilapia
 - Crocodile
 - Duck
48. Which one of the following types of vaccine is usually given at birth to a baby?
- DPT
 - Anti-measles
 - Anti-yellow fever
 - BCG

49. Study the following diagram



Which processes shown above represent melting and condensation respectively?

- B and A
 - C and D
 - B and C
 - D and A
50. Which type of grounds can be easily be affected by wind erosion?
- Bare grounds
 - Forested areas
 - A place with cover crops
 - A place with grass