

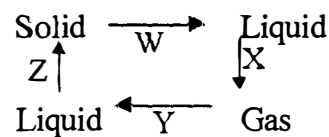
STD. 6 - END OF TERM 1 - YEAR 2020

SCIENCE

Time : 1 Hour 40 Mins

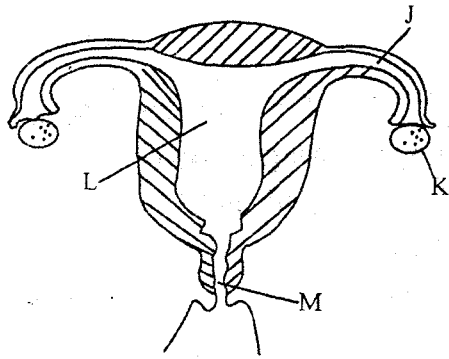
- The trachea branches into two parts called
A. lungs B. bronchioles
C. bronchi D. diaphragm
- The following are uses of medicine. Which one is **not**?
A. To cure diseases.
B. To make one work hard.
C. To relieve pain.
D. To prevent diseases.
- Counselling done before a HIV test is done is known as
A. post test
B. pretest
C. incubation
D. VCT
- Pressure in liquids depends on the
A. surface area
B. colour of the liquid
C. depth
D. shape of the container
- Crops whose seeds are found in pods are called
A. legumes
B. cereals
C. fruits
D. oil crops
- Which of the following methods of grazing is **not** rotational?
A. Tethering.
B. Paddockking
C. Strip grazing
D. Stall grazing
- Which of the following is **not** a sign of a child suffering from rickets?
A. Bow shaped legs
B. Swollen knee joints
C. Brittle bones
D. Persistent cough

- Which of the following is **not** a characteristic of amphibians?
A. They lay eggs
B. They are vertebrates
C. Adults breathe through lungs
D. Their bodies are covered with scales
- Animal feed which is cut, dried and preserved is called
A. concentrates
B. hay
C. silage
D. pasture
- Changes that affect the feelings and behaviours of an adolescent are called
A. physical changes
B. chemical changes
C. emotional changes
D. bodily changes
- Name the processes of heat transfer marked W and X respectively

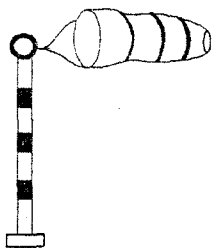


- melting, evaporation
 - evaporation, freezing
 - condensation, evaporation
 - freezing, evaporation
- Which of the following groups consists of green non-flowering plants only?
A. Moss, maize, fern
B. Fern, algae, pine
C. Mushrooms, moulds, toadstools
D. Cypress, moss, moulds

The diagram below represents the female reproductive system. Use it to answer questions 13 to 15.



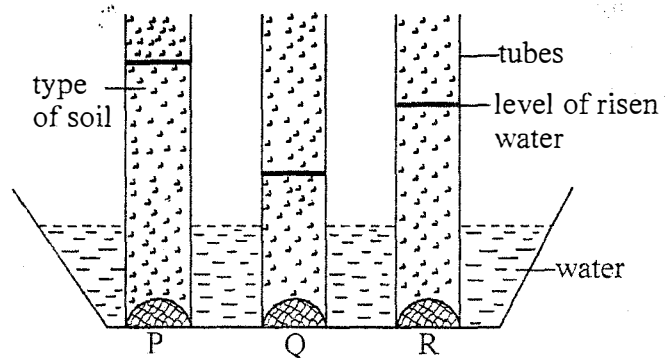
13. In which of the following labelled parts does fertilization of the ovum occur?
 A. M B. L
 C. J D. K
14. Name the parts marked M and L respectively.
 A. Cervix, uterus
 B. Fallopian tube, uterus
 C. Fallopian tube, vagina
 D. Vagina, uterus
15. What is the function of the part labelled K?
 A. Produce sperms.
 B. Produce ovules.
 C. Produce ova.
 D. Fertilise ova.
16. Which of the following is not an immunisable disease?
 A. Tuberculosis. B. Diphtheria.
 C. Measles. D. Bilharzia.
17. Which of the following is the use of weather instrument shown below?



- A. Measures the amount of wind.
 B. Shows the direction and strength of wind.

- C. Measures temperature of wind.
 D. Measures the speed of wind.
18. Which one of the following stages of HIV infection, does one test negative?
 A. Window B. Incubation
 C. Symptomatic D. Full blown
19. Which of the following is **not** a way of maintaining simple tools?
 A. Cleaning after use.
 B. Sharpening cutting tools.
 C. Oiling and greasing.
 D. Storing in a damp store.
20. Which of the following is **not** a characteristic of solids?
 A. Solids have a definite shape
 B. Solids take the shape of the container
 C. Solids have definite volume
 D. Solids have a definite mass
21. Which one of the following is **not** a function the roots in plants?
 A. Absorption of water and minerals.
 B. Storage of food in some plants.
 C. Transpiration.
 D. Support the plant firmly in the soil.

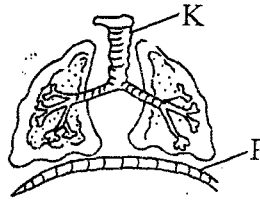
Std five pupils set up the experiment shown below.



22. Which property of soil was being investigated?
 A. Capillarity B. Drainage
 C. Soil texture D. soil profile
23. Which types of soil were put in the tubes P, Q and R respectively?
 A. Clay, sand, loam B. Loam, clay, sand

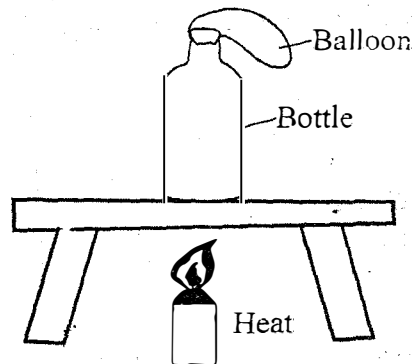
- C. Clay, loam, sand
D. Sand, clay, loam
24. Name the fourth, fifth and seventh planets in order from the sun.
A. Mass, Neptune, Venus
B. Mass, Jupiter, Uranus
C. Mercury, Jupiter, Uranus
D. Mercury, Saturn, Uranus
25. The following are effects of HIV infection. Which one affects the nation?
A. Stigmatization B. Sadness
C. Lower population D. Poor health
26. Which part of the male reproductive system is **incorrectly** matched with its function?
A. Testis - Production of sperms
B. Urethra - Passage of sperms and urine
C. Epididymis - Stores sperms
D. Penis - Produces semen
27. Why are insulators used in cooking utensils?
A. They are good conductors of heat
B. They are long lasting
C. They are cheap
D. They are poor conductors of heat
28. Which type of teeth is **correctly** matched with its function?
A. Incisors - biting and grinding.
B. Canines - tearing and piercing.
C. Premolars - grinding and cutting.
D. Molars - chewing and cutting.
29. Which of the following is a physical change in both boys and girls?
A. Breasts appear.
B. Gain in weight and increase in height.
C. Hair on the chest.
D. Voice deepens.
30. Which one of the following is **not** a good behaviour when having meals?
A. Chewing food slowly and in small bites.
B. Avoiding spitting food.
C. Licking the plate after having a delicious meal.
D. Avoid talking with food in the mouth.

31. Use the diagram below to answer the question that follows



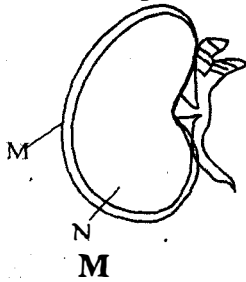
- Name the parts labelled **K** and **P** respectively
- A. Trachea, diaphragm
B. Trachea, bronchi
C. Diaphragm, air sacs
D. Diaphragm, lungs
32. Which one is **not** a recommended way of handling chemicals?
A. Burning empty containers of the chemicals
B. following instructions carefully
C. bathing after spraying
D. clearly labelling containers of chemicals

The experiment below was used to investigate the effects of heat on matter



33. From the experiment we can conclude that
A. gases expand when heated
B. solids expand when heated
C. gases change state when heated
D. solids change state when heated
34. Bilharzia can be prevented by using the following methods **except**
A. not swimming in water bodies
B. maintaining proper hygiene
C. using latrines and toilets properly
D. wearing gumboots when working in stagnant water
35. All the following are characteristics of wind pollinated flowers **except**
A. anthers hang out
B. sticky stigma and bright petals
C. dull petals and many pollen grains
D. feathery stigma

36. Name the parts of the seed shown below



- | | |
|-------------|-----------|
| A. seedleaf | cotyledon |
| B. testa | endosperm |
| C. testa | cotyledon |
| D. seedleaf | endosperm |

37. At what age is the child immunised against measles?

- | | |
|-------------|-------------|
| A. one week | B. 9 months |
| C. 1 year | D. Birth |

38. Which type of soil erosion can be prevented by having gutters on the roof of a house?

- | | |
|------------|-----------|
| A. Splash. | B. Sheet. |
| C. Gully. | D. Rill. |

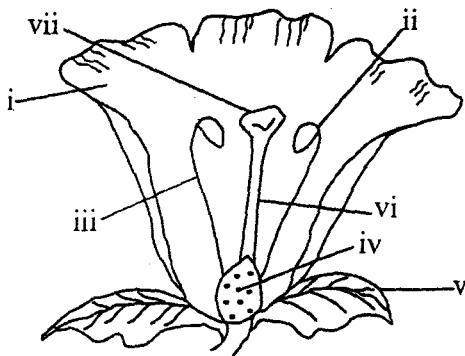
39. Who among the following writes a prescription note?

- | | |
|------------|--------------|
| A. Nurses. | B. Teacher. |
| C. Doctor. | D. Patients. |

40. Digestion of food is completed at the part called

- | | |
|--------------------|------------|
| A. large intestine | B. stomach |
| C. ileum | D. rectum |

Use the diagram of the flower below to answer questions 41 to 44.



41. Which are the female parts?

- | | |
|------------|----------------|
| A. i,ii, v | B. iv, vi, vii |
| C. ii, iii | D. iii, vi |

42. What is the function of the part vii?

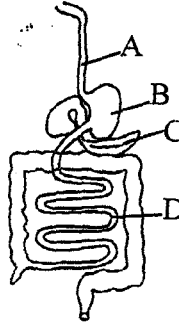
- A. Produces pollen grains.
 B. Produce ovules.
 C. Receives pollen grains.
 D. Receive ovules.

43. Name the parts labelled iii and ii respectively

- | | |
|---------------------|-----------------------|
| A. filament, style | B. anthers, style |
| C. filament, anther | D. pollen tube, style |

44. In which of the parts of the digestive system drawn below do the following processes take place

- (i) food is mixed up
 (ii) germs are killed
 (iii) digestion of protein takes place



45. What happens to the diaphragm when we breathe in? It

- | | |
|--------------|------------------------|
| A. Flattens. | B. Becomes domeshaped. |
| C. Expands. | D. Contracts. |

46. Why are reptiles said to be cold blooded animals?

- | |
|--|
| A. They have cold blood |
| B. They reproduce by laying eggs |
| C. Their body temperature changes with the surrounding |
| D. Their body temperatures is constant |

47. Which one of the following groups of foods are sources of proteins?

- | |
|--|
| A. Arrowroots, fish and sweet potatoes |
| B. Peas, fish, eggs. |
| C. Cheese, rice, eggs. |
| D. Maize, rice, meat. |

48. Which of the following is **not** a characteristic of cumulus clouds?

- | |
|---------------------------------------|
| A. White in colour. |
| B. Looks like bundles of cotton wool. |
| C. Indicate fair weather. |
| D. Are dark grey in colour. |

49. Conduction is a method of heat transfer that takes place in

- | | |
|------------|-------------------------|
| A. liquids | B. gases |
| C. solids | D. all states of matter |

50. Adolescent boys and girls can prevent themselves from sexually transmitted infections by

- | |
|----------------------------------|
| A. having many sexual partners |
| B. being faithful to one partner |
| C. abstaining from sex |
| D. marrying at an early age |