

SCHOOL BASED EVALUATION TEST

STD 7 - YEAR 2020

SCIENCE

Time: 1hrs 40 min

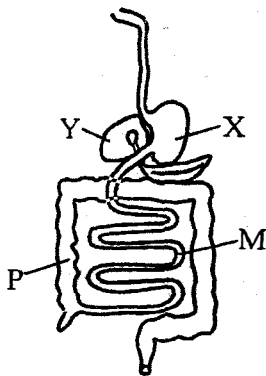
READ THESE INSTRUCTIONS CAREFULLY.

1. You have been given this question paper and a separate answer sheet. The question paper contains 50 questions.
2. Make sure that you have written on the answer sheet.

(i) Your name

(ii) Name of your school

1. The component of blood that has nucleus and has no specific shape is used for
A. clotting the blood
B. transporting oxygen
C. fighting infections
D. transporting food nutrients
2. The left ventricle of the heart pumps blood to the
A. lungs
B. venacava
C. other body parts
D. pulmonary artery
3. Diana tested negative in HIV test, but she infected her friend, in which stage was she likely to be in
A. window
B. incubation
C. symptomatic
D. full blown
4. Which statement below is **true** about heat energy?
A. Heat travel faster in water
B. Heat causes changes in states of matter
C. Heat cannot be transferred through vacuum
D. Heat is used in photosynthesis process
5. Which one of the following gases is **not** part of rare gases?
A. Argon
B. Neon
C. Helium
D. Oxygen
6. The diagram below shows human digestive system



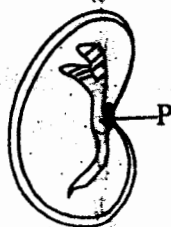
Which statement about the figure above is **not correct**?

- A. Part X digests beans
 - B. Part Y is not part of alimentary canal
 - C. The part marked P absorbs water and mineral salts
 - D. Part M absorbs undigested food
7. Human intestinal worms can be controlled through the following methods **except**
A. rotational grazing
B. regular deworming
C. washing hands after visiting toilets
D. proper cooking of foods
 8. The following are immunisable disease
(i) polio
(ii) tetanus
(iii) measles
(iv) whooping cough
(v) tuberculosis
Which pair of diseases is immunised **once** in an infant?
A. I and v
B. ii and iv
C. iii and v
D. i and iii
 9. Which one of the following physical changes occurs only to a boy during the adolescence stage?
A. Increase in weight and height.
B. Menstrual flow
C. Growth of hair in armpit
D. Wet dreams

10. Which tooth is correctly matched with its description?

Teeth	Description
A. Incisor	used for piercing and tearing
B. Canine	has ridges used for grinding
C. Premolar	has three roots used for chewing and grinding
D. Molars	has ridges used for chewing and grinding

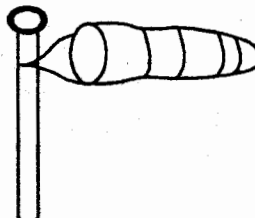
11. The best soil for making pots has
- high water retention capacity
 - big particles
 - best drainage
 - rough texture
12. The diagram below shows a bean seed with a hole marked P



What is the function of part P?

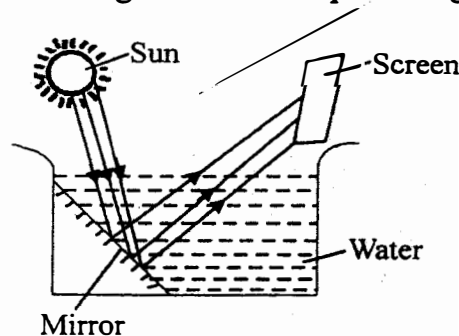
- Attached the seed to the pod
 - Allows emergence of plumule
 - Allows photosynthesis
 - Allows the passage of radicle during germination
13. Which is the 6th planet in the solar system?
- Jupiter
 - Saturn
 - Uranus
 - Mars
14. Ears are protected from noise pollution using
- ear bands
 - gas masks
 - earplugs
 - cotton swabs
15. Which one of the following is an agent of soil erosion?
- Wind
 - Splash
 - Insects
 - Sheet
16. Which one of the following activity does not take place during dry season?
- Harvesting crops
 - Drying cereals
 - Irrigating the land
 - Weeding

17. Oiling and greasing reduces friction force by
- increasing the treads
 - reducing the area of contact between the moving parts
 - increasing the surface area in contact
 - making the surfaces rough
18. The diagram below shows a certain weather instrument.



Which one of the statement is not true about the instrument?

- It is used to indicate the direction of the wind
 - It shows the strength of the wind
 - It is used to show pilot the speed of the wind
 - It is open both ends
19. Wearing gumboots and groves while working in stagnant water can prevent one of the following diseases. Which one is it?
- Bilharzia
 - Cholera
 - Tuberculosis
 - Typhoid
20. Which statement is not true about all mammals? All mammals
- have fur
 - give birth
 - have mammary glands
 - have constant body temperature
21. A pupil did the experiment shown below to investigate a certain aspect of light



The pupil was investigating:

- A. reflection of light
- B. how light travel
- C. formation of rainbow
- D. refraction of light

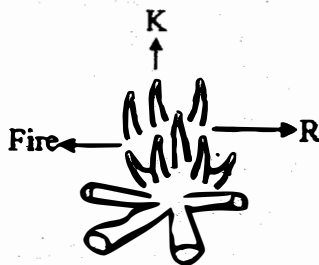
22. Which plant has roots similar to that of carrots?

- A. Onions
- B. Arrow root
- C. Sweet potatoes
- D. Irish potatoe

23. Which one of the following internal parasites is only found in the ileum of the host?

- A. Hookworm
- B. Roundworm
- C. Lungworm
- D. Tapeworm

24. The figure below shows burning fire



heat from the fire reaches point K and R respectively through a process called

- A. radiation and convection
- B. convection and conduction
- C. Convection and radiation
- D. Convection and conduction

25. Force is measured using a device called

- A. newton
- B. beam balance
- C. spring balance
- D. kilograms

26. Which drug below does not have any medicinal value but is legal in Kenya?

- A. Tobacco
- B. Panadol
- C. Bhang
- D. Cocaine

27. A plant may depend on each other to meet their needs **except** for the following. Which one?

- A. support
- B. habitat
- C. pollination
- D. shade

28. The problem of the teeth drawn below cannot be controlled by



- A. visiting dentist regularly
- B. eating sugary foods
- C. observing oral hygiene
- D. eating balanced diet rich in calcium

29. Which one of the following is true observation when a plastic ruler is rubbed on human hair?

- A. It breaks
- B. It burns
- C. It start picking small papers and dust
- D. It expands

30. The best reason why honey is used in food preservation is that:

- A. it dehydrate food
- B. it kills the decomposers
- C. sweets the food
- D. prevents air entry into the food

31. Which plant below has the male part of a flower and female part on different plants?

- A. Pawpaw
- B. Maize
- C. Coconut
- D. Orange

32. What is the function of the liver in human digestive system?

- A. Helps in absorption of digested food
- B. Complete the digestion of food
- C. Produce digestive juice that digest fats and oils
- D. Absorbs water and minerals

33. In breathing system the exchange of gases takes place in the

- A. nose
- B. diaphragm
- C. lungs
- D. bronchioles

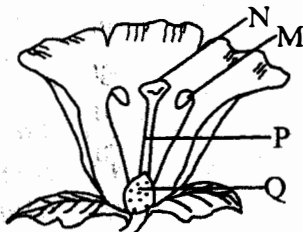
34. The soil that cracks when that has the following characteristics **except**

- A. highest drainage
- B. highest capillarity

- C. less air
- D. Sticky when wet

35. What is evaporation?
- A. Change of solid to gas
 - B. Change of liquid to gas
 - C. Change of gas to liquid
 - D. Change of solid to liquid

36. The diagram below shows a flower



In which part above does the fertilization take place?

- A. M
 - B. N
 - C. P
 - D. Q
37. The third polio and second DPT should be given to a child at the age of
- A. 6 weeks
 - B. 10 weeks
 - C. at birth
 - D. 9 months
38. The following are grazing methods. Which one is **not** a rotational method of grazing?
- A. Paddocking
 - B. Strip grazing
 - C. Stall feeding
 - D. Tethering
39. Oxygen and water are conditions necessary for
- A. photosynthesis
 - B. breathing
 - C. burning
 - D. rusting
40. In male reproductive system sperms are produced in the
- A. testis
 - B. scrotum
 - C. pening
 - D. spermduct
41. Which plant below is saprophytic?
- A. Pine
 - B. Mushrooms
 - C. Grass
 - D. Broom rape
42. The living components of environments are
- A. water and animals
 - B. soil and plants
 - C. plants and animals
 - D. air and water

43. Which type of soil erosion if uncontrolled can lead to formation of V-shaped deep channels?
- A. Gully erosion
 - B. Sheet erosion
 - C. Splash erosion
 - D. Rill erosion

44. What is the importance of roughage in the diet?
- A. Help in digestion
 - B. Help in blood formation
 - C. Prevents constipation
 - D. Provide body with energy

45. Reflected sound is called
- A. echo
 - B. vibration
 - C. reflection
 - D. incident

46. Which food group below is suitable for a child suffering from kwashiorkor?
- A. Beans, milk, eggs
 - B. Oranges, spinach, melon
 - C. Green bananas, bread, potato
 - D. Spinach, beef, ugali, orange

47. Which is the hottest planet in solar system?
- A. Mercury
 - B. Venus
 - C. Earth
 - D. Jupiter

48. Which one of the following is common between 5kg of sand and 5kg of cotton wool?
- A. Volume
 - B. Density
 - C. Mass
 - D. Texture

49. Which one of the following does the animal get through licking salt?
- A. Fats and oils
 - B. Energy
 - C. Proteins
 - D. Minerals

50. A pupil visited hospital with the following symptoms;
- (i) pain in joint and muscles
 - (ii) fever and headache
 - (iii) skin rashes
- The pupils is likely to be suffering from
- A. Malaria
 - B. Cholera
 - C. Tuberculosis
 - D. Typhoid