

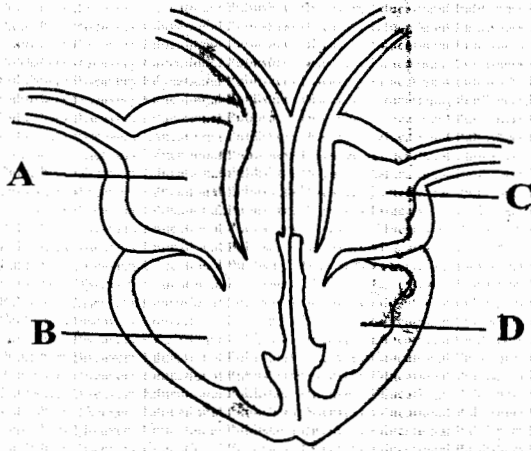
STANDARD SEVEN

2020

SCIENCE

Time: 1 hour 40 minutes

1. The diagram below shows a mammalian heart



Which of the following chamber pumps blood to all parts of the body?

- A. D
- B. C
- C. A
- D. B

2. Which one of the following is the smallest blood vessel?

- A. Capillaries
- B. Arteries
- C. Vein
- D. Plasma

3. Veins are different from Arteries in that;

- A. veins have narrow lumen than the arteries
- B. veins carry blood under high pressure
- C. veins carries blood away from the heart
- D. veins have valves

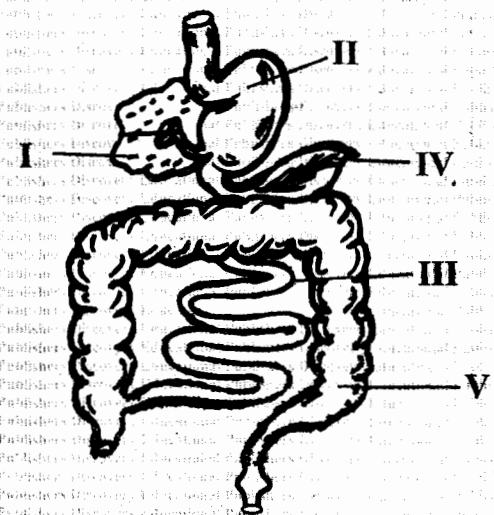
4. Which one of the following is not a function of plasma?

- A. Transporting heat
- B. Transporting oxygen
- C. Transporting other blood cells
- D. Transporting hormones

5. Which one of the following is not an example of communicable diseases?

- A. Malaria
- B. Tuberculosis
- C. Typhoid
- D. Anaemia

6. The system below shows a digestive system. Which parts are not found in the alimentary canal?

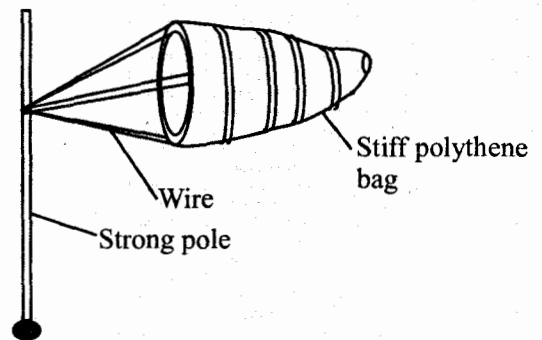


- A. I and II
- B. II and IV
- C. I and IV
- D. III and IV

7. Which one of the following drugs is **not** prohibited in Kenya?
- Bhang
 - Miraa
 - Cocaine
 - Mandrax
8. Which one of the substances is **not** contained in Tobacco?
- Tar
 - Nicotine
 - Carbon dioxide
 - Carbon monoxide
9. Vaccine given at birth protects an infant against;
- measles and yellow fever
 - tuberculosis and polio
 - diphtheria and hepatitis
 - tuberculosis and whooping cough
10. Tuberculosis **cannot** be prevented by;
- living in a well ventilated room
 - boiling drinking water
 - immunisation
 - avoiding overcrowded places
11. Which one of the following is **not** a health effect of drug abuse?
- Addiction
 - Truancy
 - Poor judgement
 - Lack of concentration

12. Clouds that have a flat bottom are **unlikely** to:-
- indicate fine weather
 - have flat bottom
 - be low in the sky
 - be mountainous

13. The diagram below shows a certain weather instrument.

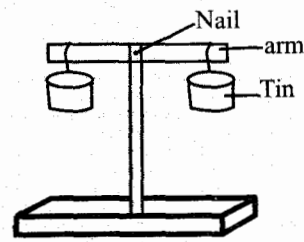


Which one of the following statements is **not** correct about the weather instrument above?

- It has two openings
 - It measures two aspect of weather
 - It has a wider tail than its mouth
 - It is located in the air strips
14. Which one of the following materials is **not** necessary to investigate how light travels?
- Match boxes
 - String
 - Candle
 - Periscope

15. Which of the following should be the **most** abundant component of environment on the earth surfaces?
- Water
 - Soil
 - Air
 - Animals
16. Heat transfer in both liquids and gases is through a process called _____
- radiation
 - convection
 - conduction
 - evaporation
17. The surrounding of a living thing is called _____
- environment
 - weather
 - climate
 - temperature
18. Which one of the following planet is the brightest?
- Mercury
 - Venus
 - Earth
 - Jupiter
19. Which one of the following is a sign of cholera?
- Skin rashes
 - Violent diarrhoea and vomiting
 - Blood in stool
 - Swimmer itches

20. The diagram below shows a simple instrument.



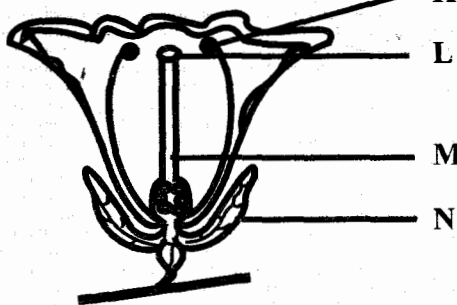
The instrument is used to compare;

- force
 - volume
 - weight
 - mass
21. Force is measured in
- Kilograms
 - Newtons
 - Grammes
 - Tonnes
22. The main sources of heat and light energy on earth is the _____
- moon
 - fire
 - sun
 - food
23. Which one of the following is **not** a use of light?
- Communication
 - Warming our bodies
 - Discourage pests
 - Seeing

24. Which one of the following is **not** a major component of environment?

- A. Light
- B. Soil
- C. Animals
- D. Plants

25. The diagram below shows the reproductive part of a flower. Which one of the parts above is **not** correctly matched with its function?



- A. N - protects flower at bud stage
- B. M - development of pollen tube
- C. K - production of the male cells
- D. L - produces pollen grains

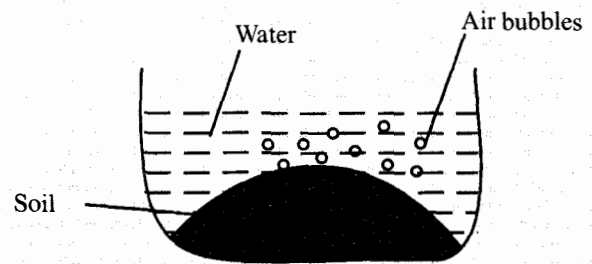
26. Which state of matter has definite volume but no definite shape?

- A. Sand
- B. Water
- C. Oxygen
- D. Chalkdust

27. The texture of the soil is determined by;

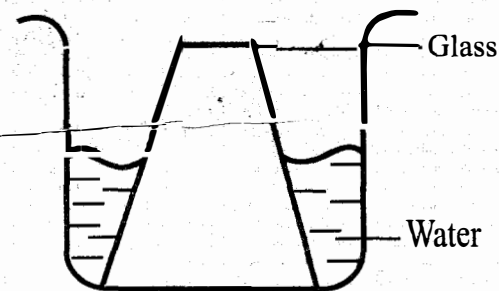
- A. size of soil particles
- B. sources of soil
- C. amount of soil
- D. farming method

28. Standard four pupils carried out the set-up below. The pupils were investigating;



- A. humus in soil
- B. living things in soil
- C. air in water
- D. air in soil

29. The diagram below represent a set - up to investigate.



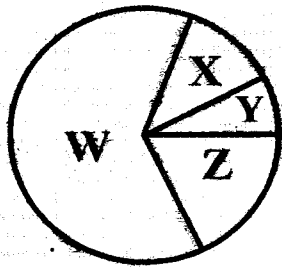
- A. Air has mass
- B. Air has weight
- C. Air occupies space
- D. Liquids takes the shape of the container

30. Which one of the following is **not** a method of rotational grazing?

- A. Tethering
- B. Paddockking
- C. Strip grazing
- D. Stall feeding

31. Which one of the following is **not** an example of legume pasture?
- A. Nappier grass
 - B. Desmodium
 - C. Lucern
 - D. Glycine
32. Which one of the following is non-green plant?
- A. Ferns
 - B. Moss
 - C. Moulds
 - D. Algae
33. Which one of the following is **not** a vertebrate?
- A. Toad
 - B. Lizard
 - C. Bat
 - D. Snail
34. Which one of following is **not** a source of water?
- A. Tap
 - B. Rivers
 - C. Ocean
 - D. Rainfall
35. Which one of the following drug is made in the laboratories?
- A. Mandrax
 - B. Cocaine
 - C. Bhang
 - D. Heroine
36. People infected with HIV/AIDs need the following **except**;
- A. love and care
 - B. medical care
 - C. hygiene
 - D. inadequate diet.
37. Which one of the following is **not** a characteristic of insect pollinated flowers?
- A. Brightly coloured petals
 - B. Light pollen grains
 - C. Have scent
 - D. Produce fewer pollen grains
38. The weed with white large flowers, ~~poisonous with thorns on the fruits is;~~
- A. oxalis
 - B. blackjack
 - C. thorn apple
 - D. wandering jew
39. The process by which water vapour changes to liquid is called _____
- A. evaporation
 - B. condensation
 - C. melting
 - D. freezing

40. The pie chart below represents components of air. The gas that supports burning is represented by letter



- A. X
B. Y
C. W
D. Z
41. Which one of the following animal does **not** have same number of legs as the rest?
A. Butterfly
B. Mites
C. Termites
D. Flea
42. Which one of the following is **not** an example of force?
A. Mass
B. Gravity
C. Weight
D. Friction
43. Some curative medicine are also called ____
A. vaccine
B. antibiotics
C. painkillers
D. suppliments
44. Which one of the following is a function of white blood cells?
A. Transporting hormones
B. Fighting disease causing germs
C. Helps in blood clotting
D. Transporting oxygen
45. Which one of the following is an oil crop?
A. Sunflower
B. Sisal
C. Cassava
D. Coffee
46. Which one of the following plant has similar root as beans?
A. Maize
B. Wheat
C. Pea
D. Rice
47. The following are examples of animal fats **except**;
A. butter
B. cheese
C. margarine
D. bacon
48. General body weakness, tiredness and headaches are signs and symptoms of ____
A. Kwashiokor
B. Marasmus
C. Rickets
D. Anaemia

49. Which of the following is **not** a magnetic material?

- A. Iron
- B. Nickel
- B. Chromium
- D. Aluminium

50. The part of a seed that stores food in dicot is called _____

- A. radicle
- B. plumule
- C. cotyledon
- D. testa