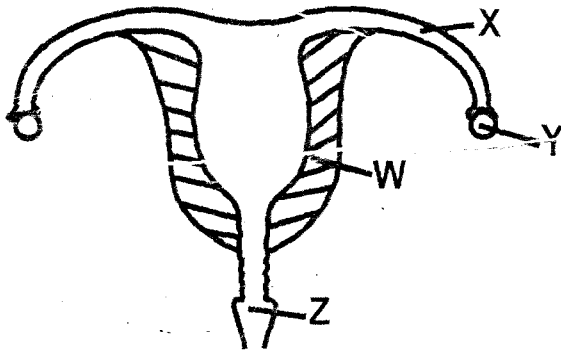


STANDARD SIX - 2020

SCIENCE

Time: 1Hr 40mins

- Which one of the following is the **least** factor to consider when classifying plants?
A. Colour B. Cotyledons
C. Size D. Flowers
- The **last** teeth to be shed in young children are
A. canine B. molars
C. incisors D. premolars
- The diagram below shows female reproductive system.



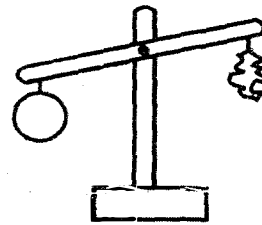
In the figure below which part shows where female and male sex cells fuse?

- X B. Y
 - W D. Z
- Which one of the following takes place during inhalation?
A. Lungs contract.
B. Ribs moves downwards.
C. Diaphragm form a dome-shape.
D. Ribs moves inwards.
 - The following are characteristics of a certain weed:
(i) Has short fleshy stems.
(ii) Has pink flowers.
(iii) Grows under the shade.

The weed is **likely** to be

- black jack
- sodom apple
- pigweed
- oxalis

- Which one of the following is **not** a reason why animals move from one place to another?
A. To remove waste.
B. For mating.
C. Search for food and water.
D. Escape predators.
- The diagram below shows an experiment done by pupils during a Science lesson.



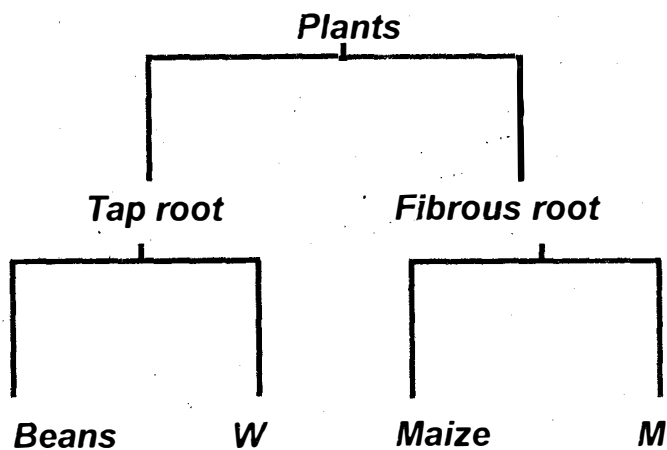
The set-up shows that

- air exerts pressure
 - air occupies space
 - air expands and contracts
 - air has mass.
- Which animals is **correctly** matched with its product?

	Animals	Product
A.	Goat	Milk, mutton, mohair.
B.	Sheep	Wool, mutton and milk
C.	Cow	Milk, hide and pork.
D.	Poultry	Eggs, meat and milk.

- Which one of the following is **true** about sharks and ducks? Both
A. have constant body temperature
B. have gills
C. have scales
D. lay fertilized eggs.
- Heat travels in air through a process called
A. radiation B. convection
C. conduction D. heating
- Lack of minerals in the diet can cause
A. rickets and anaemia
B. rickets and marasmus
C. kwashiorkor and marasmus
D. anaemia and kwashiorkor.

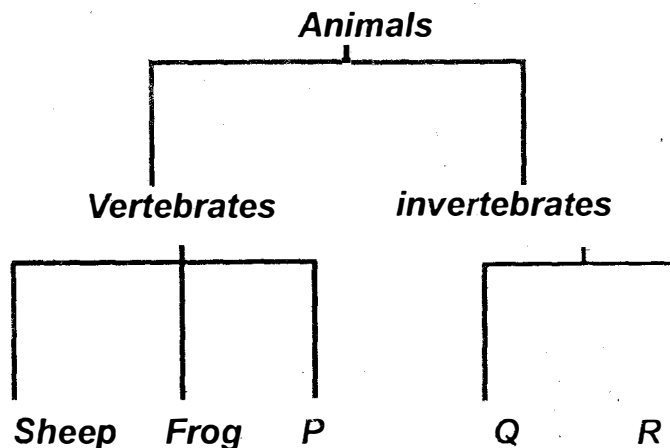
12. Which one of the following makes a metallic bowl to float on water?
 A. Material B. Size
 C. Mass D. Shape
13. The chart below shows classification of roots of different plants.



Which plants can be represented by letter **W** and **M** respectively?

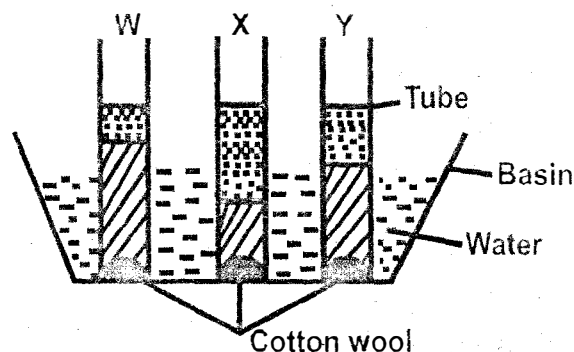
- A. Wheat - Rice
 B. Peas - Green grams
 C. Grass - Wheat
 D. Green grams - Onion
14. Which one of the following is a sign of tuberculosis?
 A. Pain in the joints.
 B. Headache.
 C. Blood in the sputum and saliva.
 D. Blood in the faeces.
15. Which planet is nearest to the sun in the solar system?
 A. Earth B. Moon
 C. Mars D. Mercury
16. What is the principle behind the working of a rain gauge?
 A. Liquids expand and contract.
 B. Liquids occupy space.
 C. Air in motion.
 D. Matter has mass.
17. What is convection?
 A. Transfer of heat in air and water.
 B. Transfer of heat in liquids only.
 C. Transfer of heat in gases only.
 D. Transfer of heat in solids only.

18. Study the chart below.



Which animals best represents P, Q and R respectively?

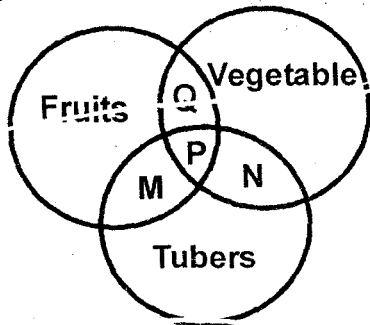
- A. Turkey, fish, snake.
 B. Mite, flea, termite.
 C. Snake, bat, mite.
 D. Fish, spider, housefly.
19. The change of solid to liquid involves a process called
 A. freezing B. melting
 C. condensation D. evaporation
20. The best method for prevention against bilharzia is
 A. draining stagnant water
 B. immunization
 C. wearing gumboots and gloves when working in water
 D. boiling milk from a cow.
21. Which one of these components of soil improves the soil texture?
 A. Water B. Organic matter
 C. Minerals salts D. Animals
22. Std 6 pupils used the arrangement below to investigate a certain property of soil.



Which one of the following does not need to be the same in the above experiment?

- A. Amount of soils.
- B. Size of the tubes.
- C. Amount of cotton wool.
- D. The type of soils.

23. Which one of the following diseases are immunized at the age of birth?
- A. Polio and whooping cough,
 - B. Yellow fever and tetanus.
 - C. Tuberculosis and polio.
 - D. Tuberculosis and diphtheria.
24. The chart below shows classification of crops.



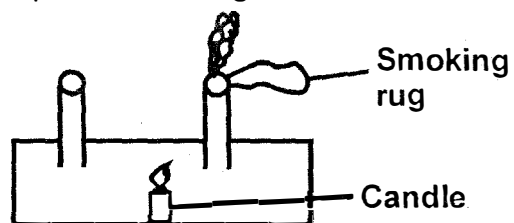
Which letter above represents carrots?

- A. P
 - B. M
 - C. Q
 - D. N
25. The following are importances of HIV and AIDS testing **except**
- A. to secure employment
 - B. to decide on marriage
 - C. to change behavior
 - D. to campaign against the spread of the HIV.
26. The temperature at which an ice cube melts is the same at which it will
- A. freeze
 - B. evaporate
 - C. condense
 - D. boil.
27. Light energy can be used in all the following ways **except**
- A. making food in plants
 - B. germination of seeds
 - C. communication
 - D. keep away pests in houses.
28. Which one of the following is an effect of HIV and AIDS on individual?
- A. Sadness.
 - B. School dropouts.
 - C. Low living standards.
 - D. Loss of income.

29. Which one of the problems related to teeth can be prevented by eating food rich in vitamin C?
- A. Tooth decay.
 - B. Bleeding gum.
 - C. Bad breath.
 - D. Tooth cavity.
30. The second stage of HIV and AIDS infection is called
- A. window stage
 - B. incubation stage
 - C. symptomatic
 - D. full blown AIDS.
31. Which one of the following is **true** about the clouds drawn below?



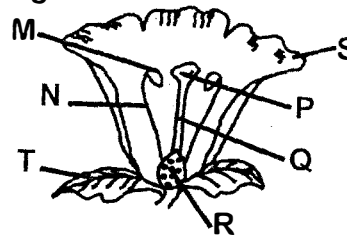
- A. Found high in the sky.
 - B. Indicate fair weather.
 - C. Are feathery.
 - D. Indicate heavy rainfall.
32. Grade 4 pupils heated garden soil in an open tin to see smoke. What were they investigating?
- A. Air in the soil.
 - B. Smoke in the soil.
 - C. Humus in the soil.
 - D. Water in the soil.
33. Fats and oils are digested by a juice called
- A. gastric juice
 - B. bile juice
 - C. saliva
 - D. intestinal juice.
34. Which one of the following materials can **not** allow any light to pass through?
- A. Mirror
 - B. Sky light.
 - C. Frosted glass
 - D. Air.
35. The diagram below was used by Std 6 pupils to investigate transfer of heat.



- The experiment did not work, which mistake did they make?
- A. Placing the smoking rug in the wrong place.
 - B. The candle was placed in the wrong place.

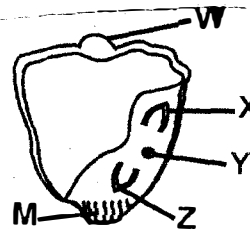
- C. They burnt the smoking rug.
D. They used a small candle.
36. Which animal requires shearing regularly?
A. Sheep. B. Goat.
C. Pig. D. Camel.
37. The air we breathe in is cleaned in the
A. lungs B. diaphragm
C. mouth D. nose
38. Which one of the following is **not** true about water as a liquid?
A. Has mass.
B. Has definite size.
C. Has definite shape.
D. Take the shape of the container.
39. The following are parts of the female reproductive system **except**
A. ovary B. urethra
C. womb D. vagina.
40. Which one of the following is **not** a use of water at home?
A. Washing clothes.
B. Drinking.
C. Cleaning cars.
D. Fishing.
41. Which one of the following physical changes during adolescence is found in girls only?
A. Breaking of the voice.
B. Shoulders broaden.
C. Experience wet dreams.
D. Start of menstrual flow.
42. HIV virus cannot be spread through
A. sexual intercourse
B. open wounds.
C. breast milk.
D. sharing utensils.
43. Which one of the following is **not** an effect of moving air?
A. Soil erosion.
B. Windmills.
C. Blowing roof tops.
D. Felling trees.

44. The figure below shows a flower



Which parts above show the pistil of a flower?

- A. M and N B. S and T
C. S, P, Q and T D. P, Q and R
45. In a flower, fertilization takes place in the part called
A. ovary B. stigma
C. style D. anthers
46. A germinating maize seedling gets its food from the
A. endosperm B. cotyledon
C. plumule D. embryo.
47. Study the maize grain below.



Which parts make the embryo?

- A. X and Z B. W and M
C. X and Y D. Y and Z
48. Which group of food below makes a balanced diet?
A. Ugali, milk and chicken.
B. Chapati, beans and potatoes.
C. Orange, milk and chips.
D. Fish, irish potato and green bananas.
49. Which one of the following is **not** a way of maintaining simple tools?
A. Proper use of tools.
B. Oiling and greasing.
C. Safe storage.
D. Cleaning the tools.
50. When modelling the solar system thorns are used to
A. model sun and planets
B. paste manila on the soft board
C. fix the orbits
D. fix the sun and the planets on orbits.