

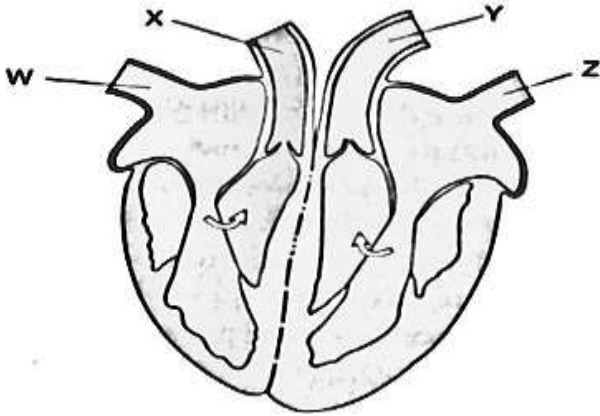
EXAMINATION

STD 7 MAY ASSIGNMENT - 2020

SCIENCE

Time: 1h 40mins

- Which one of the following is **NOT** a function of blood?
 - Transporting heat from the liver to the body
 - Transporting other blood cells
 - Transporting oxygen to the lungs
 - Fighting disease causing germs
- Which one of the following statements is not correct?



The blood vessel marked Y:

- Carries deoxygenated blood
 - Is the major artery in the circulatory system
 - Carries blood from the heart to the body organs
 - Is the aorta
- Plants depends on other plants for the following **EXCEPT**?
 - habitat
 - protection
 - shelter
 - support
 - Which of the following is **not** a communicable disease?
 - Tetanus
 - Whooping cough
 - Tuberculosis
 - Typhoid

- The following statements are correct except one. When breathing in _____
 - The volume of the chest increases.
 - The diaphragm moves downward.
 - The ribs moves upward and outwards.
 - Lungs contract.
- Which of the following crop pest is not correctly matched with the crop damage it causes?
 - Aphids – sucking sap from the leaves.
 - Cutworms – cutting the young stem.
 - Weevils – boring holes in seeds.
 - Weaverbirds – boring holes in stem
- Which of the following animal parasite is not found in the ileum of the host?
 - Tapeworms
 - Lungworm
 - Hookworms
 - Roundworms
- The diagram below illustrates _____.

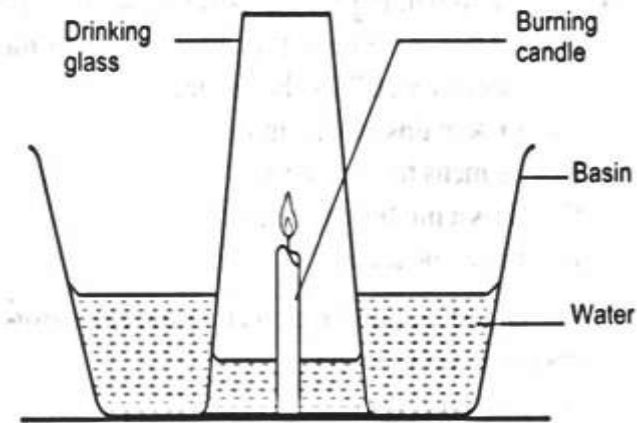


- cross – pollination
 - fertilization
 - self pollination
 - fusion
- Which one of the following is not a myth about HIV/AIDS?
 - aids is caused by witchcraft
 - it can be cured
 - it is caused by a virus
 - it is spread by a mosquito bite

10. Which one of the following is **NOT** a state matter?

- A. Liquids
- B. Solids
- C. Gases
- D. Water

11. Standard six pupils performed the experiment shown in the setup below to demonstrate a certain property of air.



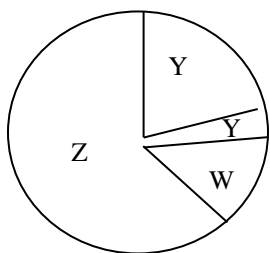
Which property of air were they demonstrating?

- A. Air exerts pressure
- B. Air occupies space
- C. Part of air is used for burning
- D. Air expands when heated

12. Which one of the following does **not** show use of water sparingly?

- A. use of drip irrigation.
- B. repair of leaking pipes.
- C. Closing running taps.
- D. using water meant for bathing to mop windows and doors.

13. Which of the following component of air is represented by letter z.

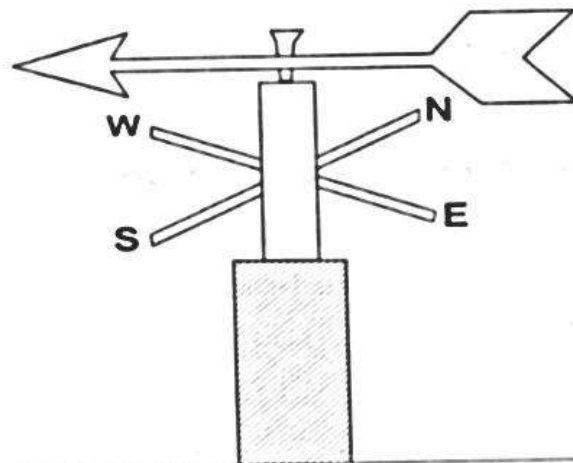


- A. Carbon dioxide
- B. Oxygen
- C. Nitrogen
- D. Rare gases

14. The presence of farm chemicals like fertilizers and pesticide in water may lead to?

- A. Acid rain
- B. Excessive growth of algae and other waterweeds.
- C. Reduction on amount of oxygen in the water.
- D. Spread of water borne disease.

15. Which of the following statements is **NOT** TRUE about the instrument below?

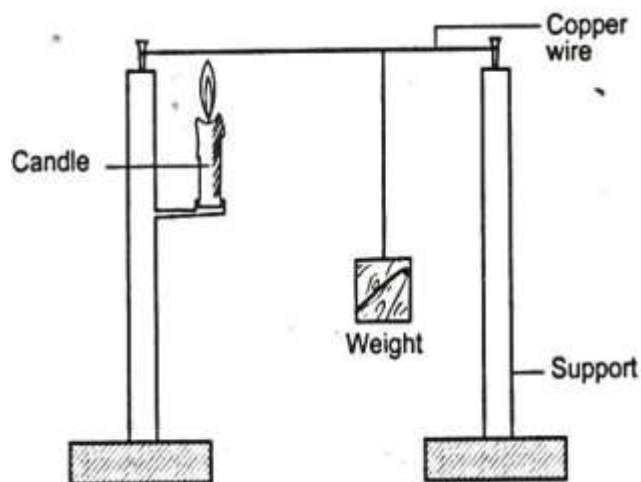


- A. It is working under the fact that air is in motion
- B. The wind is blowing from SW to NE.
- C. It should have a bigger tail end than the arrow head
- D. It should have a bigger arrow head than the tail end

16. Which of the following mixture cannot be separated using a sieve. The mixture of:

- A. Maize and rice
- B. rice and wheat flour
- C. Bean and maize
- D. Fine sand and coarse sand.

17. The diagram below shows an experiment



The above experiment was used to show that?

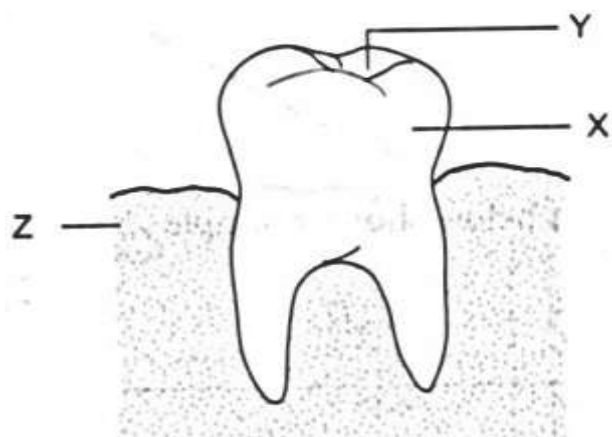
- A. Matter occupies space
- B. Expansion in solids
- C. Part of air that supports burning.
- D. Expansion in liquids.

18. Which of the following state of matter has the following characteristics:

- i. Have no fixed shape
- ii. Have definite size.
- iii. Have a definite mass

- A. Water
- B. Soil
- C. Oxygen
- D. Stone

19. The diagram below shows a human tooth



Which one of the following statements is NOT TRUE about the tooth?

- A. It grows permanently
- B. The part marked Y is used for chewing
- C. The part marked X is called crown
- D. Diseases that affect the part marked Z can be prevented by brushing teeth.

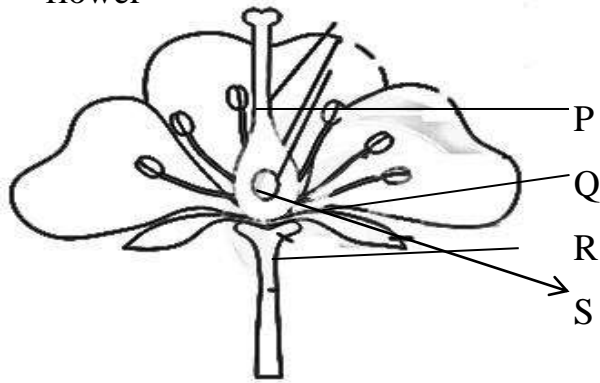
20. Which of the following materials does not allow light to pass through

- A. Clean water
- B. Glass
- C. Mirror
- D. Air

21. For the correct formation of strong bones and teeth the body needs food rich in?

- A. Iron and Sodium
- B. Calcium and Phosphorous
- C. Carbohydrates and fats.
- D. Vitamins A and B

22. The diagram below shows some part of a flower



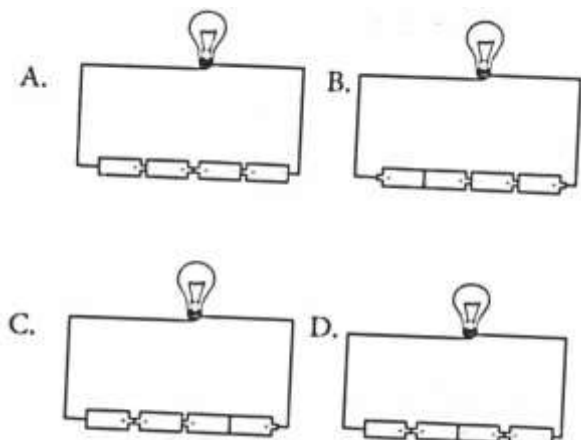
Which letter represents the part responsible for the germination of pollen grain?

- A. P
- B. Q
- C. R
- D. S

23. Which of the following material **cannot** be attracted by a magnet?

- A. Copper
- B. Nickel
- C. Cobalt
- D. Steel

24. In which of the following circuit diagrams will the bulb not light?



25. Which of the following is not a constituent of a balanced diet in animals?

- A. Proteins
- B. Water
- C. Minerals
- D. Fats and Oils

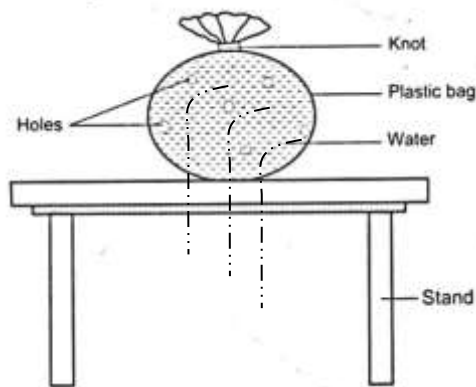
26. Which of the following is not a constituent of a balanced diet in animals?

- C. Proteins
- D. B. Water
- A. Minerals
- B. Fats and Oils

27. Which of the following methods of food preservation preserve food by making bacteria inactive?

- A. Drying
- B. Salting
- C. Freezing
- D. smoking

28. The diagram below shows a certain aspect of matter. It shows pressure in,



- A. Gases depend on pressure
- B. Liquids is exerted in all directions
- C. Gases decrease with volume
- D. Liquids are exerted at the same level.

29. Which of the following deficiency disease has the following signs and symptoms?
 i. Visible bones under the skin.
 ii. Alert eyes.
 iii. Wrinkled face.
 iv. Very thin and weak
 A. Marasmus
 B. Ricket
 C. Anemia
 D. Kwashiorkor
30. Which of the following statement about water is true?
 A. Water is a good conductor of heat.
 B. Water is a poor conductor of electricity.
 C. Water takes the shape of the container.
 D. Water has no definite size.
31. Which of the following is **NOT** a maintenance practice for simple tools?
 A. Oiling metallic part.
 B. Sharpening cutting edges.
 C. Greasing movable parts.
 D. Painting them regularly.
32. Which of the following is **not** a use of light energy?
 A. Keeping away pests.
 B. Warming ourselves.
 C. For security purpose.
 D. For comfort and also for easy movement.
33. Which of the following factor does not affects sinking and floating
 A. Size of the object
 B. Weight of the object
 C. Material of the object.
 D. Shape of the object.
34. Which of the following is **not** a major component of surrounding?
 A. Air
 B. Water
 C. Plant
 D. Building
35. Which of the following animal is **not** correctly matched with the type of movement it makes?
 A. Grasshopper – limping and creeping.
 B. Locust – hopping and leaping
 C. Kangaroo – hopping
 D. Snake – slithering
36. Which of the following deficiency is caused by both lack of both minerals and vitamins
 A. marasmus
 B. kwashiorkor
 C. rickets
 D. anaemia
37. Which of the following vaccine is only given at birth to the infant?
 A. BCG
 B. DPT
 C. Yellow fever vaccine
 D. Anti polio vaccine
38. The following are effect of drug abuse. Which pair consists of social effect only?
 A. Rape and withdraw symptoms.
 B. Truancy and accidents.
 C. Convulsions and loss of consciousness.
 D. Rape and convulsion.
39. Which of the following statement is not true about liquid and solid?
 A. Liquid flow because they exert pressure.
 B. Pebbles and marbles sinks in water.
 C. Wood and plastic float on water.
 D. All solid have same density.
40. The presence of heavy mountainous clouds that may cover the whole sky are signs of?
 A. Low temperature B. Heavy rainfall
 C. Fine weather D. Strong winds
41. A glass containing ice cubes was placed in the open. After sometime the outer surface of the glass became wet. This shows that:
 A. Air can be cooled
 B. Ice form water when it melts.
 C. Air contains water vapour.
 D. Air is a mixture of gases.

42. The diagram below shows a blood vessel



Which one of the following is NOT TRUE about the blood vessel above?

- A. It is found deep inside the skin
 - B. Blood flows through it at low pressure.
 - C. It carries blood back to the heart.
 - D. It has valves that prevents flow back of blood.
43. Kirimi, a pupil in Stima Academy was complaining of the following signs and symptoms:
- i. *Swimmers itch*
 - ii. *Coughing*
 - iii. *Fever*
 - iv. *Blood in stool and faeces*
- The disease he was likely to be suffering is spread by?
- A. Bilharzia flukes
 - B. Fresh water snail
 - C. Contaminated water
 - D. Bacteria
44. Which of the following is a function of fibre in the diet?
- A. It adds nutrients to the body.
 - B. It helps in getting rid of undigested food material.
 - C. It helps in constipation.
 - D. It contains a lot of threads.
45. Which of the following method of grazing is the most economical?
- A. Strip grazing
 - B. Zero grazing
 - C. Tethering
 - D. Herding

46. The following are effect of a certain drug:

- i. Hallucination
- ii. Lack of sleep
- iii. Loss of sleep

The drug described above is?

- A. Bhang
 - B. Cocaine
 - C. Mandrax
 - D. Khat
47. The main function of a beam balance is
- A. measuring weight
 - B. Comparing masses of different objects
 - C. Finding the force applied
 - D. Measuring weather instrument
48. The best method of controlling weeds in a large farm is?
- A. Use of chemicals such as herbicides.
 - B. Digging them out.
 - C. Slashing.
 - D. Mulching
49. What is the main function of a beam balance.
- A. measuring weight
 - B. comparing masses of different objects
 - C. finding the force applied
 - D. measuring weather instrument
50. Which one of the following is **NOT** a function of nose in the breathing system?
- A. Filter air
 - B. Warm air
 - C. Moisten air
 - D. Absorb air