

# STD 6 - YEAR 2020

## SCIENCE

Time: 1hrs 40 min

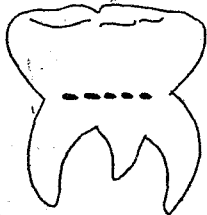
### READ THESE INSTRUCTIONS CAREFULLY.

1. You have been given this question paper and a separate answer sheet. The question paper contains 50 questions.
2. Make sure that you have written on the answer sheet.

(i) Your name

(ii) Name of your school

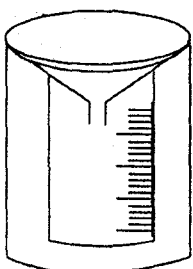
1. The following are characteristics of a certain state of matter  
(i) definite mass  
(ii) indefinite shape  
(iii) indefinite size  
The substance is likely to be  
A. sand                      B. toothpaste  
C. air                         D. ice
2. The instrument used to measure the quantity of matter in an object is called;  
A. spring balance      B. see saw  
C. thermometer        D. beam balance
3. Which one of the following is **not** part of female reproductive system?  
A. Urethra                B. Vagina  
C. Uterus                 D. Cervix
4. Which statement is **not** true about the tooth drawn below?



- A. it is part of wisdom teeth
  - B. it makes permanent teeth only
  - C. they are 12 in an adult
  - D. they are the last to be shed off
5. HIV/AIDS can be spread from one person to another through the following ways **except**  
A. breast milk  
B. sexual intercourse  
C. sharing injection needles  
D. mosquito bites

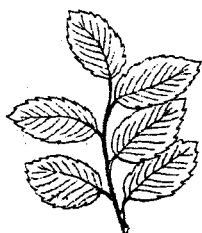
6. Which crop below is **not** a root tuber?  
A. Carrot                      B. Arrow root  
C. Irish potato                D. Cassava
7. All the following materials are needed when making an air thermometer **except**  
A. glass bottle                B. straw  
C. water                        D. funnel
8. Animals protect themselves from danger in various ways, which one is wrongly matched with its way of protection?  
A. Snake → slithering  
B. Wasps → stinging  
C. Cockroach → running away  
D. Millipede → coiling
9. A certain immunisable disease has the following signs and symptoms.  
(i) stiffness of the neck and jaws  
(ii) caused by rusty objects and animal dung  
The disease is likely to be  
A. tetanus                      B. polio  
C. T.B                            D. Yellow fever
10. Which pair of plants below grow in areas without enough rainfall?  
A. Eucalyptus and reeds  
B. Euphorbia and acacia  
C. Mangrove and bananas  
D. Rice and cactus

11. The diagram below shows a certain weather instrument.



Which statement is true about the above instrument?

- A. It is used to measure the amount of rainfall in millilitres  
 B. It is dug 30cm into the ground to prevent the splashing water into the funnel  
 C. It is raised 15cm above the ground to prevent evaporation  
 D. It is found in an open area and recordings are taken similar intervals each day
12. Which plant below is green non-flowering  
 A. Moss                                      B. Yeast  
 C. Sugarcane                                D. Cactus
13. Which one of the following is **not** a proper way of storing medicines?  
 A. Keeping in a cool and dry place  
 B. Storing in tight juice bottles  
 C. Keeping away from direct sunlight  
 D. Keeping away from the reach of children
14. Which one of the following is **not** an industrial use of water?  
 A. Making fountains  
 B. Making beer  
 C. Washing coffee berries  
 D. Washing farm implements
15. The figure below shows a certain type of leaf



The leaf is likely obtained from plant called

- A. maize                                      B. sugarcane  
 C. pigweed                                    D. wheat

16. Which one of the following is a characteristics of a soil with the poorest drainage?

- A. It has large air spaces  
 B. It spreads easily when dry  
 C. Sticky when wet  
 D. Retain little water

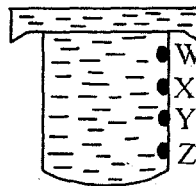
17. The following are signs of a certain nutritional deficiency diseases

- (i) rapid heart beat  
 (ii) the skin turns pale  
 (iii) dizziness

The disease described above is likely to be

- A. Anaemia                                    B. Kwashiorkor  
 C. Rickets                                     D. Marasmus

18. Grade 4 pupils carried out the experiment below.



Which hole threw water the nearest?

- A. W    B. X  
 C. Y    D. Z

19. Which is the largest planet in the solar system?

- A. Saturn                                      B. Earth  
 C. Uranus                                     D. Jupiter

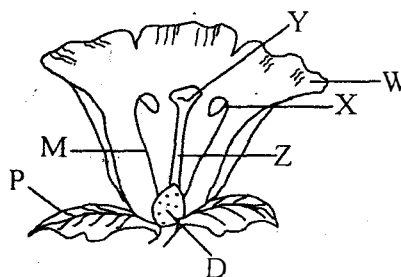
20. Which material below is **not** required when modelling solar system?

- A. Thorns                                      B. Clay  
 C. Cotton wool                                D. Manilla paper

21. Which one of the following is **not** important for seed germination?

- A. Water                                        B. Warmth  
 C. Soil    D. Air

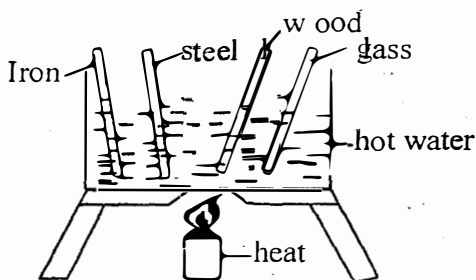
22. The figure below shows a flower



Which letters above shows pistil

- A. X, M                      B. X, Y, Z  
C. Y, Z, P                    D. Y, Z, D

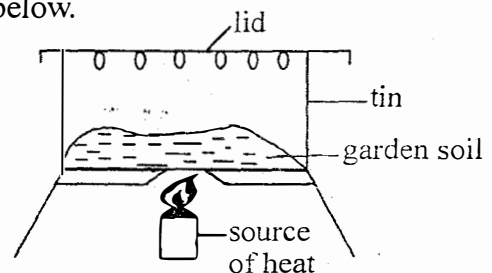
23. Which one of the following is **not** a reason for proper storage of tools?  
A. For tidiness  
B. To avoid accidents  
C. To prevent bruntness  
D. For safety
24. Which one of the following does not take place in mouth when eating?  
A. Breaking up of food  
B. absorption of digested food  
C. Rolling food into bolus  
D. Digestion of food
25. The **best** prevention method against tuberculosis is  
A. Immunization  
B. Living in a well ventilated room  
C. Boiling fresh milk from cows before drinking  
D. Avoid crowded places
26. Std 5 pupils placed different solids in hot water as shown below.



After sometime the pupils held the end of each solid. What were they investigating?

- A. Convection in water  
B. Conduction of heat in different solids  
C. Floaters and sinker in hot water  
D. Melting of different materials
27. Which weed has black seeds with hooks that hold on human clothes and animal fur?  
A. Black jack                      B. Sodom apple  
C. Mexican marigold              D. Pigweed

28. The following are characteristics of clouds  
(i) look like bundles of cotton wool  
(ii) appear low in the sky  
(iii) indicate heavy rainfall  
(iv) mountainous in shape  
Which pair describe the clouds that have flat base?  
A. i, ii                              B. i, iii  
C. ii, iv                             D. i, iv
29. Which personal items should never be shared?  
A. Toothpaste                      B. Spoons  
C. Hair brush                      D. Soap
30. Which one of the following is an effect of HIV on individual?  
A. Low living standards  
B. Sadness  
C. Loss of income  
D. School drop out
31. The two processes involved in changing ice to water vapour are:  
A. melting and condensation  
B. melting and evaporation  
C. freezing and condensation  
D. evaporation and condensation
32. Which one of the following is **not** a source of water?  
A. Tanks                              B. Ocean  
C. Rains                               D. Springs
33. Grade 4 pupils carried out the experiment below.

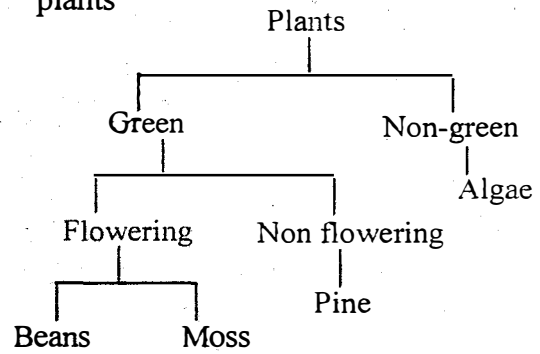


Which soil component were they investigating?

- A. Water                              B. Air  
C. Organic matter                  D. Mineral salts
34. Which one of the following materials is not needed when investigating soil capillarity?  
A. Piece of cloth                  B. Water  
C. Container                        D. Funnel

35. The transfer of heat that does **not** require any medium is called  
 A. conduction                      B. radiation  
 C. convection                      D. evaporation
36. The strength and direction of the moving air can be measured using an instrument called  
 A. air thermometer      B. windvane  
 C. windsock                      D. anemometer
37. Which one of the following is the function of all roots in plants?  
 A. Food storage  
 B. Breathing  
 C. Absorption  
 D. Making plant food
38. Which one of the following is **not** a characteristic of insect pollinated flower?  
 A. Light and powdery pollen grains  
 B. Presence of nectar  
 C. Heavy sticky pollen grains  
 D. Flat and sticky stigma
39. Which one of following is **not** true about the first stage of HIV infection?  
 A. Tests positive  
 B. there are no signs  
 C. can infect others  
 D. HIV tests negative
40. Sound travels poorest in  
 A. empty space                      B. air  
 C. water                              D. solids
41. Which group of animals consists of amphibians only?  
 A. Frog, gecko, turtle  
 B. Tilapia, omena, madfish  
 C. Whale, popoise, seal  
 D. newt, salamander, toad
42. What happens to diaphragm when the ribs move downwards and inwards?  
 A. Flattens  
 B. Moves upwards  
 C. Moves downwards  
 D. Get inflated

43. The chart below shows classification of plants



- Which one is wrongly classified?  
 A. Moss and pine      B. Beans and pine  
 C. Moss and algae      D. Beans and algae
44. Which one of the following is **not** a harmful animal?  
 A. Mole                              B. Bee  
 C. Termites                      D. Snake
45. The size of the soil particles affects all the following **except**  
 A. soil texture                      B. size of air spaces  
 C. soil fertility                      D. soil drainage
46. Which one of the following is not an importance of water in the diet?  
 A. Prevent constipation  
 B. Prevent the dehydration  
 C. Help in removing wastes  
 D. Help in food digestion
47. Which one of the following is an opaque  
 A. Sky light                      B. Clean water  
 C. Tinted glass                      D. Mirror
48. Which material below cannot be used to make rollers?  
 A. Maize cobs                      B. Maize stalks  
 C. Blocks of wood                      D. Round pipes
49. A beam balance is used for  
 A. measuring forces  
 B. comparing masses  
 C. comparing distances  
 D. measuring the friction
50. Which one of the following is not a use of wind?  
 A. Sailing boats  
 B. Winnowing  
 C. Turning windmills  
 D. Felling trees