

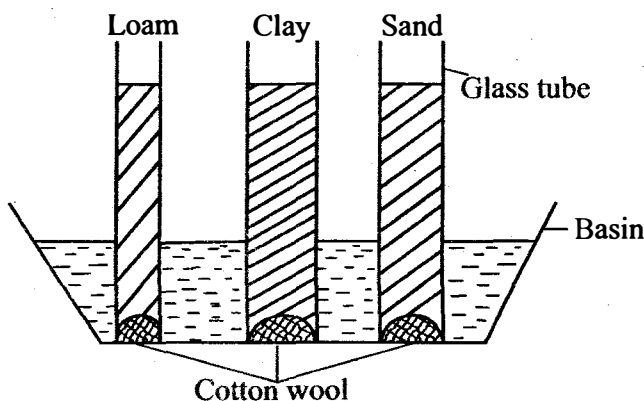
# STANDARD SIX - YEAR 2020

## CONTINUOUS ASSESSMENT TEST

### SCIENCE

TIME: 1 hr 40 mins

- Which one of the following changes colour to hide from its enemies?  
A. Sheep                      B. Frog  
C. Chameleon                D. Lion
- In bottling factories, water is **mainly** used for  
A. swimming                B. making bottles  
C. cooking                    D. making soft drinks
- Which one of the following types of soil becomes sticky when wet?  
A. Clay                        B. Loam  
C. Sand                        D. Sand and loam
- Irish potatoes and yams are all examples of \_\_\_\_\_  
A. vegetables                B. stem tubers  
C. root tubers                D. cereals
- Which one of the following animals **does not** have scales on its body?  
A. Lizard                      B. Toad  
C. Fish                         D. Chicken
- Which component of soil is produced when heating is done until smoke comes out?  
A. Water                        B. Mineral particles  
C. Organic matter          D. Air
- The following are characteristics of sandy soil. Which one is **not**?  
A. Low air content.        B. Low capillarity.  
C. Large particles.        D. Highest drainage.
- Std. 5 pupils from Sacred Heart Academy were investigating capillarity in soil as shown below.

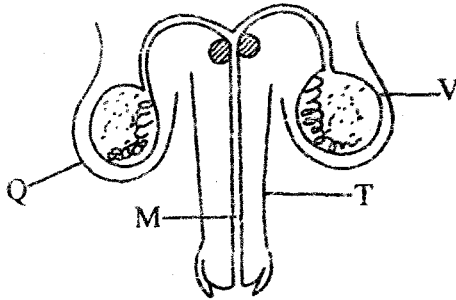


- The pupils made wrong observation because of using \_\_\_\_\_
- A. different types of soil.  
B. same size of cotton wool.  
C. water in the same container.  
D. tubes of different diameters.
  - Which of the following pairs of diseases is caused by lack of minerals in the diet?  
A. Kwashiorkor and rickets.  
B. Marasmus and rickets.  
C. Rickets and anaemia.  
D. Anaemia and marasmus.
  - Three of the following are functions of nose **except**  
A. moistening air.  
B. absorbing air.  
C. warming air.  
D. trapping dust.
  - Which one of the following shows the 3<sup>rd</sup>, 5<sup>th</sup> and 8<sup>th</sup> planets in the solar system respectively?  
A. Earth, Jupiter and Neptune.  
B. Mars, Saturn and Uranus.  
C. Earth, Mars and Uranus.  
D. Venus, Saturn and Neptune.
  - Which one of the following weather instruments is **not** correctly matched with its use?

<u>Instrument</u>	<u>Use</u>
A. Raingauge	Amount of rainfall.
B. Windvane	Direction of wind.
C. Thermometer	Temperature.
D. Windsock	Speed and direction of wind.
  - Which one of the following is **not** an effect of HIV infection to the family?  
A. Sadness.  
B. Loss of earning.  
C. Low self esteem.  
D. Lack of parental care.

14. In which one of the following female reproductive parts does fertilization of the ovum take place?
- A. Vagina                      B. Oviduct  
C. Ovary                        D. Uterus

The diagram below illustrates the male reproductive system. Use it to answer questions 15-17.

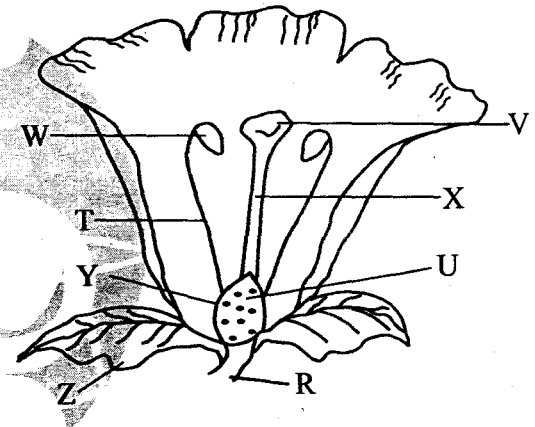


15. The part marked M is known as \_\_\_\_\_
- A. Sperm duct.                B. Penis.  
C. Oviduct.                    D. Urethra.
16. Sperms are produced in the part marked \_\_\_\_\_
- A. M                              B. T  
C. V                              D. Q
17. Ovulation takes place in the \_\_\_\_\_
- A. ovary                        B. cervix  
C. urethra                      D. Oviduct
18. Which of the following is a physical change that occurs to boys **only** during adolescence?
- A. Increase in weight and height.  
B. Enlargement of breasts.  
C. Broadening of chests.  
D. Appearance of pimples.
19. Which of these pairs of food provides the body with carbohydrates?
- A. Peas and ugali.  
B. Ripe banana and chapati.  
C. Cassava and chapati  
D. Milk and meat.
20. The first polio vaccine and 3<sup>rd</sup> DPT vaccine is administered to infants at \_\_\_\_\_ and \_\_\_\_\_
- A. 6 weeks, 9 weeks  
B. birth, 14 weeks  
C. 6 weeks, 14 weeks  
D. birth, 10 weeks

21. Which among the following is not a communicable disease?
- A. Cholera  
B. Malaria  
C. Tuberculosis  
D. Kwashiorkor

22. \_\_\_\_\_ is the most expensive method of weed control.
- A. Uprooting  
B. Digging out  
C. Use of chemicals  
D. Mulching

Use the diagram of a flower shown below to answer questions 23 - 26.

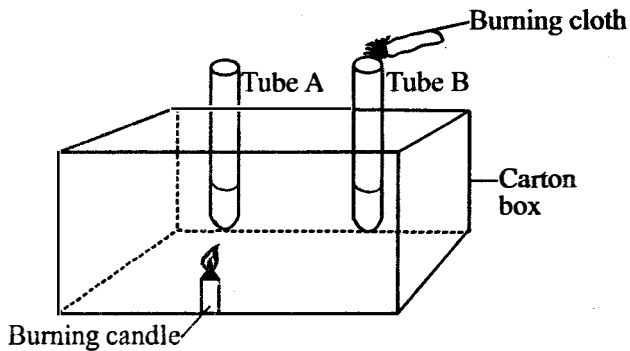


23. Germination of pollen grains occurs at the part marked \_\_\_\_\_
- A. V                              B. Y  
C. X                              D. W
24. The part marked \_\_\_\_\_ protects the flower during its bud stage.
- A. S                              B. Z  
C. R                              D. Y
25. After fertilization, the part marked \_\_\_\_\_ develops into a fruit.
- A. Y                              B. S  
C. Z                              D. U
26. The following are bad conductors of heat **except** one. Which one?
- A. Stone  
B. Pencil  
C. Hand of a cooking pan  
D. Nail

27. The following are characteristics of a certain animal.
- Lays eggs.
  - Has constant temperature.
  - Has hair on the body.

The animal is likely to be

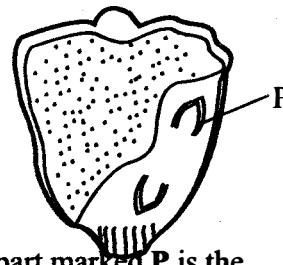
- A. whale                      B. bat  
C. spiny ant eater      D. ostrich
28. The diagram below represents a set-up that is used to demonstrate certain aspect of matter.



The aspect investigated is

- A. conduction  
B. expansion  
C. radiation  
D. convection
29. Which one of the following materials has definite volume but does **not** have a definite shape?
- A. Sand                      B. Stone  
C. Kerosene                D. Air
30. Which two of the following processes involve loss of heat?
- A. Freezing and condensation.  
B. Melting and evaporation.  
C. Melting and freezing.  
D. Evaporation and condensation.
31. The temperature at which a substance freezes is the same temperature at which the substance
- A. boils                      B. melts  
C. evaporates                D. condenses
32. The method of grazing that would require the largest piece of land to practise is
- A. paddocking                B. tethering  
C. stall feeding                D. herding

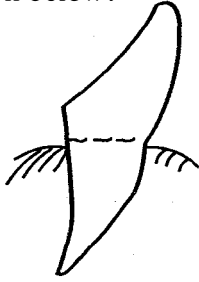
33. For two boys of different masses to balance on a see-saw,
- A. the heavier one should sit on the pivot.  
B. they should both sit on one side of the see-saw.  
C. the heavier one should move closer to the pivot.  
D. the lighter one should move towards the fulcrum.
34. Which one of the following has all the conditions necessary for germination of seeds?
- A. Air, warmth, water.  
B. Warmth, light, soil.  
C. Water, warmth, light.  
D. Soil, air, water.
35. Which one is **not** an importance of going for an HIV testing?
- A. To know one's status.  
B. To avoid the infected people.  
C. To live positively.  
D. To overcome fear.
36. Flowers P, Q, R and S have the following characteristics:
- P - Large and loosely held anthers.  
Q - Presence of nectar.  
R - Strong scent.  
S - Light pollen grains.
- Which two flowers are wind pollinated?
- A. Q and S                      B. P and R  
C. P and S                      D. Q and R
37. Below is a section of a maize grain.



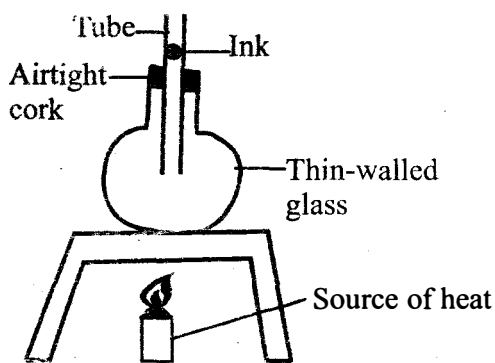
The part marked P is the

- A. hilum                      B. cotyledon  
C. plumule                      D. radicle
38. The following signs and symptoms were observed in a certain child:
- i) *Thin and weak.*      ii) *Wrinkled face.*  
iii) *Sharp eyes.*  
iv) *Hungry and crying a lot.*
- The child was **most** likely suffering from
- A. rickets                      B. kwashiorkor  
C. marasmus                      D. rickets

39. Which statement is true about the type of tooth drawn below?



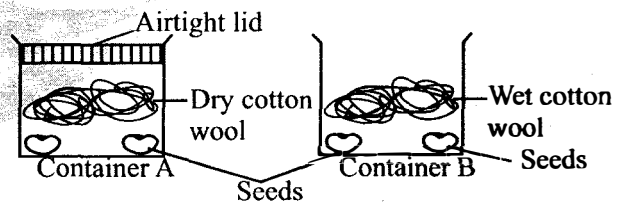
- A. It is the first to grow.  
 B. It is used for cutting and tearing food.  
 C. They are eight in total in adult's mouth.  
 D. It is the second to be shed.
40. The \_\_\_\_\_ of a flower attract insects for pollination.  
 A. petals                      B. stalks  
 C. stigmas                     D. sepals
41. The form of energy needed to remove moisture from grain is \_\_\_\_\_  
 A. sound                      B. heat  
 C. fireflies                     D. light
42. The solar system is made up of \_\_\_\_\_  
 A. nine planets only.  
 B. nine planets and the sun.  
 C. eight planets and the moon.  
 D. eight planets and the sun.
43. Pupils in class 5 carried out the experiment below during a Science lesson.



After heating the glass gently, they saw that the drop of ink dropped first then started to rise. This happened because

A. solids expand most when heated.  
 B. ink expands when heated.  
 C. liquids expand when heated.  
 D. air inside the bottle expanded.

44. Which one of the following properties will not change if clay soil is added to sand soil?  
 A. Soil capillarity.      B. Soil fertility.  
 C. Soil texture.          D. Soil colour.
45. When showing convection currents in gases using a convection box, the candle is used to  
 A. make hot air rise.  
 B. produce smoke.  
 C. burn the smouldering paper.  
 D. make the set-up attractive.
46. The cloud which is mountainous in shape and has grey colour is also likely to  
 A. be feathery and cotton-like.  
 B. be a sign of fine weather.  
 C. be a sign of heavy rainfall.  
 D. be found high in the sky.
47. Excess medicines should be  
 A. given to a friend.  
 B. given to relatives.  
 C. thrown into a pit latrine.  
 D. kept for later use.
48. Std. 6 pupils from Sacred Heart school carried out the experiment shown below.



Which condition necessary for seed germination was missing in set-up A?

- A. Soil                      B. Warmth  
 C. Air                        D. Moisture
49. Which one of the following objects is found closest to the earth?  
 A. Moon                     B. Clouds  
 C. Stars                     D. Sun
50. In the absence of a medium of transmission, heat energy can be transferred by  
 A. radiation.  
 B. convection.  
 C. radiation and convection.  
 D. conduction.